



PAVERS | WALLS | OUTDOOR LIVING



# Why Choose Keystone?



## AMERICAN-MADE WORLD CLASS MANUFACTURING

Keystone is proud to be American-Owned and Made. We manufacture our products across the country at numerous manufacturing facilities.



## NETWORK OF DEALERS & AUTHORIZED CONTRACTORS

You can find our products throughout the country, with sales locations that service both contractors & dealers. We have a valued dealer network who are knowledgeable about our products and have our products on display. We take great pride in providing in-depth regional training programs for contractors to become Authorized Keystone Hardscapes Contractors. To connect with a dealer or authorized contractor in your area, please visit [keystonehardscapes.com](http://keystonehardscapes.com)



## EXPERIENCED PROFESSIONAL ADVICE

We are more than your supplier, we are your partner. We recognize the importance of sales support and inventory. We have a phenomenal team that's trained to be your resource. Our knowledgeable staff provides expertise from sales support and installation techniques, to delivery.

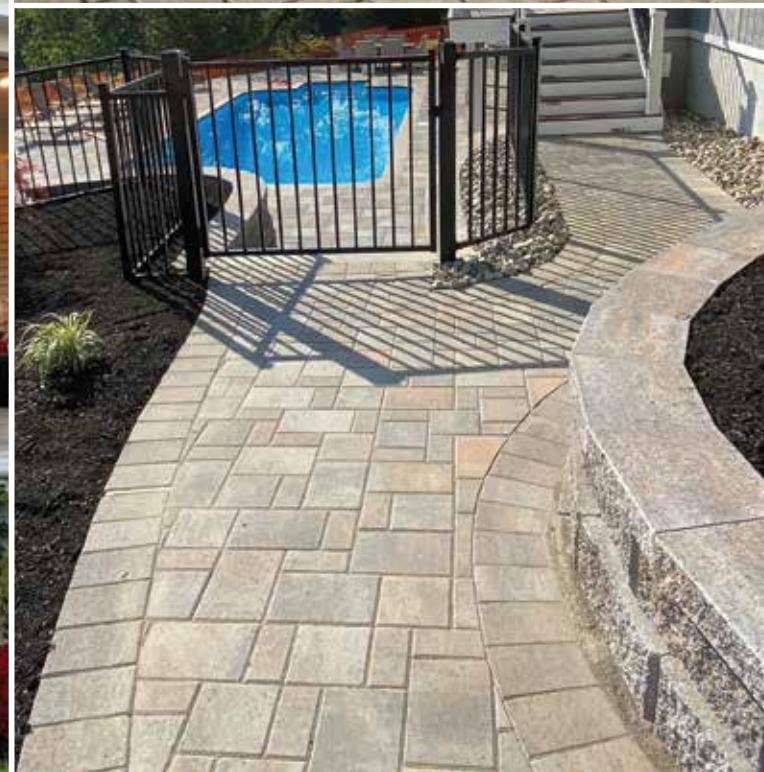
## APPLICATION KEY

### Pavers

- Pedestrian
- Light Vehicular
- Medium Vehicular
- Heavy Vehicular
- Permeable
- ADA Compliant

### Walls

- Retaining Walls
- Freestanding Walls
- Outdoor Living



# Contents

## INSPIRATION

Why Choose Keystone® ..... 2-3

## PAVER COLLECTION

### Pavers

CityStone™ Demi & Supra/6x6/6x9 ..... 6-7  
 Holland Stone..... 8-9  
 Panorama™ Demi & Supra ..... 10-11  
 Plaza Stone® Squares & Rectangles ..... 12-13  
 Plaza 4 Circle ..... 14-15  
 Luna ..... 16-17  
 Bullnose..... 18-19

### Permeable Pavers

Eco-CityLock 5x10..... 20-21  
 Eco-Panorama Demi..... 22  
 Grasstone™ II..... 23

## WALL COLLECTION

### Structural Walls

Harington® - 3 Pc..... 26-27  
 Harington® - Freestanding 3-pc ..... 28-29  
 Regal Stone Pro® - RockFace ..... 30-31  
 Regal Stone Pro® - Straight..... 32-33

### Landscape Walls

Rumbled Wall™..... 34-35  
 Nova Wall ..... 36-37

## RESOURCES

Color Matrix ..... 38  
 Product Specifications..... 39-40  
 Laying Patterns..... 41  
 Product Warranty ..... 43



# LASTING MEMORIES HAPPEN HERE

## PAVERS

CITYSTONE™ DEMI & SUPRA/6X6/6X9

HOLLAND STONE

PANORAMA™ DEMI & SUPRA

PLAZA STONE® SQUARES & RECTANGLES

PLAZA 4 CIRCLE

LUNA

BULLNOSE

## PERMEABLE PAVERS

ECO-CITYLOCK 5X10

ECO-PANORAMA DEMI

GRASSTONE™ II

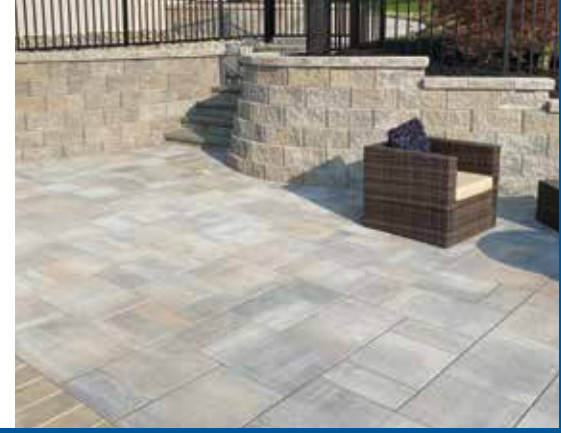


CAPE COD








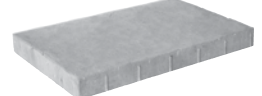
# CITYSTONE™ | Demi & Supra 6x6/6x9



CityStone pavers deliver a sleek, modern style and sophistication. CityStone Demi & Supra can be installed as stand-alone three-piece, or a combined a six-piece, paving system.



PAVERS

|   |   |   |
|---|---|---|
|  <b>4x8</b><br>$3^{15/16} \times 7^{7/8} \times 2^{3/8}$ "   |  <b>8x16</b><br>$7^{7/8} \times 15^{3/4} \times 2^{3/8}$ "   |  <b>#666 6x6<sup>1,2</sup></b><br>$5^{1/2} \times 5^{1/2} \times 2^{3/8}$ "<br>Granite & Charcoal Only |
|  <b>8x8</b><br>$7^{7/8} \times 7^{7/8} \times 2^{3/8}$ "     |  <b>16x16</b><br>$15^{3/4} \times 15^{3/4} \times 2^{3/8}$ " |  <b>#297 6x9<sup>1,2</sup></b><br>$5^{3/8} \times 8^{7/8} \times 2^{3/8}$ "<br>Charcoal Only           |
|  <b>8x12</b><br>$7^{7/8} \times 11^{13/16} \times 2^{3/8}$ " |  <b>16x24</b><br>$15^{3/4} \times 23^{5/8} \times 2^{3/8}$ " |   |
| <b>#363 Demi - Bundle</b>   | <b>#364 Supra - Bundle</b>  |   |

|   |   |   |   |   |
|---|---|---|---|---|
|  |  |  |  |  |
| Boston Blend  | Cape Cod Blend  | Charcoal  | Granite Blend   | North Creek   |

Colors printed here are as true a match as the printing process will allow. For best matching results, please refer to actual samples. Not all products & colors are available in every plant.



CHARCOAL

# HOLLAND STONE



Holland Stone offers the charm and versatility of a simple rectangular shape. From simplistic to intricate, pattern options are almost endless. Maximize design potential by combining pattern and color options.



**#217**  
3<sup>15</sup>/<sub>16</sub>" x 7<sup>7</sup>/<sub>8</sub>" x 2<sup>3</sup>/<sub>8</sub>"



Antique Terra Cotta



Boston Blend



Charcoal



Granite Blend



Oaks Blend

Colors printed here are as true a match as the printing process will allow. For best matching results, please refer to actual samples. Not all products & colors are available in every plant.



CAPE COD BLEND

# PANORAMA™ | Demi & Supra



Let this six-piece series bring your next hardscape design to life with sophistication and style. Panorama™ Demi & Supra can also be installed as two stand-alone three-piece systems.



**4x8**  
3<sup>15</sup>/<sub>16</sub>" x 7<sup>7</sup>/<sub>8</sub>" x 2<sup>3</sup>/<sub>8</sub>"



**8x8**  
7<sup>7</sup>/<sub>8</sub>" x 7<sup>7</sup>/<sub>8</sub>" x 2<sup>3</sup>/<sub>8</sub>"



**8x12**  
7<sup>7</sup>/<sub>8</sub>" x 11<sup>13</sup>/<sub>16</sub>" x 2<sup>3</sup>/<sub>8</sub>"

#367 Demi - Bundle



**8x16**  
7<sup>7</sup>/<sub>8</sub>" x 15<sup>3</sup>/<sub>4</sub>" x 2<sup>3</sup>/<sub>8</sub>"



**16x16**  
15<sup>3</sup>/<sub>4</sub>" x 15<sup>3</sup>/<sub>4</sub>" x 2<sup>3</sup>/<sub>8</sub>"



**16x24**  
15<sup>3</sup>/<sub>4</sub>" x 23<sup>5</sup>/<sub>8</sub>" x 2<sup>3</sup>/<sub>8</sub>"

#368 Supra - Bundle



Boston Blend



Cape Cod Blend



Granite Blend



North Creek

Colors printed here are as true a match as the printing process will allow. For best matching results, please refer to actual samples. Not all products & colors are available in every plant.



GRANITE BLEND

# PLAZA STONE®

## Squares & Rectangles



1

2

Plaza Stone creates a welcoming effect with its "pillow top" surface and soft curved edges. The classic square and rectangle shapes make this a versatile paving system for both commercial and residential settings.



#646 - 6x6<sup>1,2</sup>  
5½" x 5½" x 2¾"



#606 - 6x9<sup>1</sup>  
5½" x 8¼" x 2¾"



Boston Blend



Cape Cod Blend



Charcoal



Granite Blend

Colors printed here are as true a match as the printing process will allow. For best matching results, please refer to actual samples. Not all products & colors are available in every plant.



GRANITE BLEND

# PLAZA 4 | Circle



This circle pack can be combined with any other Plaza Stone paver to extend the visual impact and appeal of your project.



**A-Center**  
5 1/2" x 2 3/4" x 2 3/8"



**B-Wedge**  
5 1/2" x 6 3/16" x 2 3/8"



**C-Trap**  
5 1/2" x 4 1/2" x 2 3/8"



**D-Twinkie**  
5 1/2" x 2 3/4" x 2 3/8"



**E-3/4 Square**  
5 1/2" x 4 1/8" x 2 3/8"

#637 Bundle



Cape Cod Blend



Charcoal



Granite Blend

Colors printed here are as true a match as the printing process will allow. For best matching results, please refer to actual samples. Not all products & colors are available in every plant.





# LUNA™



Luna paver offers unique design possibilities for your home landscape. A wide variety of shapes creating organic, flowing patterns. No need to hold straight lines. Luna paver features rounded shapes, surfaces and edges which recall the timeless appeal of worn stones. The unique design of this paver makes it ideal for tight, or oddly shaped, spaces.



**#110130**  
4 1/3" x 6" x 2 1/3"



Charcoal



Granite Blend

Colors printed here are as true a match as the printing process will allow. For best matching results, please refer to actual samples. Not all products & colors are available in every plant.

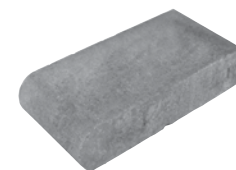


GRANITE BLEND

# BULLNOSE



Bullnose pavers are a perfect addition to any hardscape project and are most commonly used as the finished edge around pools. They can also be used to highlight an entryway, steps or any application requiring a finished edge.



#LBW6  
6" x 12" x 2<sup>3</sup>/<sub>8</sub>"



Cape Cod Blend



Charcoal



Granite Blend

Colors printed here are as true a match as the printing process will allow. For best matching results, please refer to actual samples. Not all products & colors are available in every plant.



GRANITE BLEND

# ECO-CITYLOCK® | 5x10



An innovative modular permeable paver system with contemporary aesthetics, the Eco-CityLock series delivers a sustainable, pervious pavement surface.



#315  
5" x 10" x 3 1/8"



Granite Blend



Colors printed here are as true a match as the printing process will allow. For best matching results, please refer to actual samples. Not all products & colors are available in every plant.

# ECO-PANORAMA® | Demi



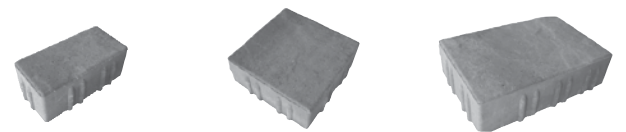
These pavers provide 100% pervious surfaces that infiltrate, filter, and decrease stormwater runoff rates and pollutant loads.



# GRASSTONE™ II



This grid paver permits water infiltration and establishes vegetation while creating a suitable platform for intermittent light vehicular use.



**4 x 8**  
4" x 8" x 3 1/8"

**8 x 8**  
8" x 8" x 3 1/8"

**8 x 12**  
8" x 12" x 3 1/8"

#366 Bundle



Granite Blend



**#189**  
23 5/8" x 15 3/4" x 3 1/8"



Pewter



WARNING: Combustion byproducts produced when using this product include carbon monoxide, a chemical known to the State of California to cause birth defects or other reproductive harm.

WARNING: Combustion byproducts produced when using this product include carbon monoxide, a chemical known to the State of California to cause birth defects or other reproductive harm.

# INSPIRING SPACES

## STRUCTURAL WALLS

HARINGTON® - 3 PC

HARINGTON® - FREESTANDING 3-PC

REGAL STONE PRO® - ROCKFACE

REGAL STONE® - STRAIGHT

## LANDSCAPE WALLS

RUMBLED WALL™

NOVA WALL





GRANITE BLEND

# HARINGTON® | 3-Pc



The Harington 3-piece wall system evokes the look and feel of natural hand-hewn stone, making a striking design statement while the rear lip feature eliminates setback and alignment issues to speed construction.



**Small**  
6" x 6" x 12"



**Medium**  
6" x 12" x 12"



**Large**  
6" x 18" x 12"

**#876 Bundle**



Granite Blend

Colors printed here are as true a match as the printing process will allow. For best matching results, please refer to actual samples. Not all products & colors are available in every plant.



BOSTON BLEND

# HARINGTON® | Freestanding 3-Pc



The Harington Freestanding 3-piece wall is crafted in compelling colors and rough-hewn textures. Create curved or straight freestanding walls, columns, outdoor kitchens and fire features with this versatile system.



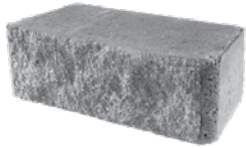
WALLS



**Small**  
6" x 6"/4" x 9"



**Medium**  
6" x 12"/10" x 9"



**Large**  
6" x 18"/16" x 9"

#889 Bundle



Granite Blend

Colors printed here are as true a match as the printing process will allow. For best matching results, please refer to actual samples. Not all products & colors are available in every plant.



DARK GRANITE BLEND

# REGAL STONE PRO® | RockFace



A full one-square-foot face complemented with natural stone texture makes the Regal Stone Pro - RockFace a distinctive addition to a landscape. The hollow but sturdy core helps lighten the unit for easy handling.



#818  
8" x 18" x 12"



Cape Cod Blend



Dark Granite Blend



North Creek



Colors printed here are as true a match as the printing process will allow. For best matching results, please refer to actual samples. Not all products & colors are available in every plant.





GRANITE BLEND

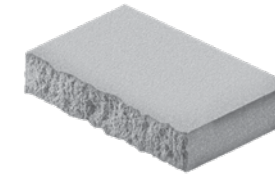
## REGAL STONE® | Straight



Regal Stone® - Straight is the perfect solution for retaining walls up to four feet high. The rear lip facilitates construction and ensures proper alignment and a precise setback. This unit utilizes a distinctive classic face style.



**#822**  
6" x 16<sup>4</sup>/<sub>5</sub>" x 12"



**3" Cap - Granite**  
3" x 18" x 13<sup>1</sup>/<sub>2</sub>"



Cape Cod Blend

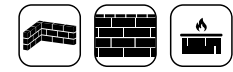


Granite Blend



GRANITE BLEND

# RUMBLED WALL™



Rumbled Wall™ provides rustic building blocks for do-it-yourself hardscape projects. Its weathered appearance offers a natural look and feel, adding texture and depth to raised planting beds, fire pits, columns, and seatwalls.



#519  
4" x 16" x 8"



Cape Cod Blend



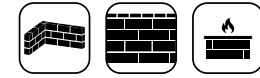
Granite Blend

Colors printed here are as true a match as the printing process will allow. For best matching results, please refer to actual samples. Not all products & colors are available in every plant.



PEWTER/WHITE

# NOVA™ WALL



Create a double-sided linear wall with both smooth and split textures. This contemporary wall combines a broad scope of design and aesthetic opportunities.



Wall  
#110199  
9" x 18" x 3"



Ash



Charcoal



Pewter



White

Limited Availability

Colors printed here are as true a match as the printing process will allow. For best matching results, please refer to actual samples. Not all products & colors are available in every plant.

# COLOR MATRIX

This color matrix serves as a guide for color selection across product lines.

| Prod. No. | PAVERS                        | Antique Terra Cotta | Ash | Boston Blend | Cape Cod Blend | Charcoal | Dark Granite Blend | Granite Blend | North Creek | Oaks Blend | Pewter | White |
|-----------|-------------------------------|---------------------|-----|--------------|----------------|----------|--------------------|---------------|-------------|------------|--------|-------|
| 363 & 364 | CityStone™ Demi & Supra       |                     |     | •            | •              | •        | •                  | •             | •           |            |        |       |
| 666       | CityStone™ 6x6                |                     |     |              |                | •        |                    | •             |             |            |        |       |
| 297       | CityStone™ 6x9                |                     |     |              |                | •        |                    |               |             |            |        |       |
| 217       | Holland Stone                 | •                   |     | •            |                | •        |                    |               |             | •          |        |       |
| 367 & 368 | Panorama™ Demi & Supra        |                     |     | •            | •              |          |                    | •             | •           |            |        |       |
| 606 & 646 | Plaza Stone                   |                     |     | •            | •              | •        |                    | •             |             |            |        |       |
| 637       | Plaza 4 Circle                |                     |     |              | •              | •        |                    | •             |             |            |        |       |
| LBW6      | Bullnose                      |                     |     |              | •              | •        |                    | •             |             |            |        |       |
| 110130    | Luna                          |                     |     |              |                | •        |                    | •             |             |            |        |       |
| 315       | Eco-CityLock 5x10             |                     |     |              |                |          |                    | •             |             |            |        |       |
| 366       | Eco-Panorama Demi             |                     |     |              |                |          |                    | •             |             |            |        |       |
| 189       | Grasstone II                  |                     |     |              |                |          |                    |               |             |            | •      |       |
| Prod. No. | STRUCTURAL WALLS              |                     |     |              |                |          |                    |               |             |            |        |       |
| 876       | Harington - 3 Pc              |                     |     |              |                |          |                    | •             |             |            |        |       |
| 889       | Harington - Freestanding 3 Pc |                     |     |              |                |          |                    | •             |             |            |        |       |
| 818       | Regal Stone® Pro - RockFace   |                     |     |              | •              |          | •                  |               | •           |            |        |       |
| 822       | Regal Stone® - Straight       |                     |     |              | •              |          | •                  |               |             |            |        |       |
| Prod. No. | LANDSCAPE WALLS               |                     |     |              |                |          |                    |               |             |            |        |       |
| 110819    | Rumbled Wall                  |                     |     |              | •              |          |                    | •             |             |            |        |       |
| 110199    | Nova Wall                     |                     | •   |              |                | •        |                    |               |             |            | •      | •     |

Suitable For:

# SPECIFICATIONS Pavers

## CityStone™ - Demi & Supra

| Product No. | Height | Dimensions   | Units/Pallet | Pallet Weight | Sq.Ft./Pallet | Pedestrian | Light Vehicular | Medium Vehicular | Heavy Vehicular | Permeable | ADA Compliant |
|-------------|--------|--|--------------|---------------|---------------|------------|-----------------|------------------|-----------------|-----------|---------------|
| #363 Demi   | 60mm   | 3 <sup>15</sup> / <sub>16</sub> " x 7 <sup>7</sup> / <sub>8</sub> " x 2 <sup>3</sup> / <sub>8</sub> "  | 80           | 2,884 lbs     | 103           | •          | •               |                  |                 |           |               |
|             | 60mm   | 7 <sup>7</sup> / <sub>8</sub> " x 7 <sup>7</sup> / <sub>8</sub> " x 2 <sup>3</sup> / <sub>8</sub> "    | 80           |               |               |            |                 |                  |                 |           |               |
|             | 60mm   | 7 <sup>7</sup> / <sub>8</sub> " x 11 <sup>13</sup> / <sub>16</sub> " x 2 <sup>3</sup> / <sub>8</sub> " | 80           |               |               |            |                 |                  |                 |           |               |
| #364 Supra  | 60mm   | 7 <sup>7</sup> / <sub>8</sub> " x 15 <sup>3</sup> / <sub>4</sub> " x 2 <sup>3</sup> / <sub>8</sub> "   | 20           | 2,884 lbs     | 103           | •          |                 |                  |                 |           |               |
|             | 60mm   | 15 <sup>3</sup> / <sub>4</sub> " x 15 <sup>3</sup> / <sub>4</sub> " x 2 <sup>3</sup> / <sub>8</sub> "  | 20           |               |               |            |                 |                  |                 |           |               |
|             | 60mm   | 15 <sup>3</sup> / <sub>4</sub> " x 23 <sup>5</sup> / <sub>8</sub> " x 2 <sup>3</sup> / <sub>8</sub> "  | 20           |               |               |            |                 |                  |                 |           |               |
| #666        | 60mm   | 5 <sup>1</sup> / <sub>2</sub> " x 5 <sup>1</sup> / <sub>2</sub> " x 2 <sup>3</sup> / <sub>8</sub> "    | 400          | 2,688 lbs     | 96            | •          | •               |                  |                 |           |               |
| #297        | 60mm   | 5 <sup>3</sup> / <sub>8</sub> " x 8 <sup>7</sup> / <sub>8</sub> " x 2 <sup>3</sup> / <sub>8</sub> "    | 250          | 2,520 lbs     | 90            | •          | •               |                  |                 |           |               |

## Holland Stone

| Product No. | Height | Dimensions  | Units/Pallet | Pallet Weight | Sq.Ft./Pallet | Pedestrian | Light Vehicular | Medium Vehicular | Heavy Vehicular | Permeable | ADA Compliant |
|-------------|--------|---|--------------|---------------|---------------|------------|-----------------|------------------|-----------------|-----------|---------------|
| #217        | 60mm   | 3 <sup>15</sup> / <sub>16</sub> " x 7 <sup>7</sup> / <sub>8</sub> " x 2 <sup>3</sup> / <sub>8</sub> " | 480          | 2,884 lbs     | 103           | •          | •               |                  |                 |           |               |

## Panorama™ - Demi & Supra

| Product No. | Height | Dimensions   | Units/Pallet | Pallet Weight | Sq.Ft./Pallet | Pedestrian | Light Vehicular | Medium Vehicular | Heavy Vehicular | Permeable | ADA Compliant |
|-------------|--------|--|--------------|---------------|---------------|------------|-----------------|------------------|-----------------|-----------|---------------|
| #367 Demi   | 60mm   | 3 <sup>15</sup> / <sub>16</sub> " x 7 <sup>7</sup> / <sub>8</sub> " x 2 <sup>3</sup> / <sub>8</sub> "  | 80           | 2,884 lbs     | 103           | •          | •               |                  |                 |           |               |
|             | 60mm   | 7 <sup>7</sup> / <sub>8</sub> " x 7 <sup>7</sup> / <sub>8</sub> " x 2 <sup>3</sup> / <sub>8</sub> "    | 80           |               |               |            |                 |                  |                 |           |               |
|             | 60mm   | 7 <sup>7</sup> / <sub>8</sub> " x 11 <sup>13</sup> / <sub>16</sub> " x 2 <sup>3</sup> / <sub>8</sub> " | 80           |               |               |            |                 |                  |                 |           |               |
| #368 Supra  | 60mm   | 7 <sup>7</sup> / <sub>8</sub> " x 15 <sup>3</sup> / <sub>4</sub> " x 2 <sup>3</sup> / <sub>8</sub> "   | 20           | 2,884 lbs     | 103           | •          |                 |                  |                 |           |               |
|             | 60mm   | 15 <sup>3</sup> / <sub>4</sub> " x 15 <sup>3</sup> / <sub>4</sub> " x 2 <sup>3</sup> / <sub>8</sub> "  | 20           |               |               |            |                 |                  |                 |           |               |
|             | 60mm   | 15 <sup>3</sup> / <sub>4</sub> " x 23 <sup>5</sup> / <sub>8</sub> " x 2 <sup>3</sup> / <sub>8</sub> "  | 20           |               |               |            |                 |                  |                 |           |               |

## Plaza Stone 6x6

| Product No. | Height | Dimensions  | Units/Pallet | Pallet Weight | Sq.Ft./Pallet | Pedestrian | Light Vehicular | Medium Vehicular | Heavy Vehicular | Permeable | ADA Compliant |
|-------------|--------|---|--------------|---------------|---------------|------------|-----------------|------------------|-----------------|-----------|---------------|
| #646        | 60mm   | 5 <sup>1</sup> / <sub>2</sub> " x 5 <sup>1</sup> / <sub>2</sub> " x 2 <sup>3</sup> / <sub>8</sub> " | 300          | 2,660 lbs     | 95            | •          | •               |                  |                 |           |               |

## Plaza Stone 6x9

| Product No. | Height | Dimensions  | Units/Pallet | Pallet Weight | Sq.Ft./Pallet | Pedestrian | Light Vehicular | Medium Vehicular | Heavy Vehicular | Permeable | ADA Compliant |
|-------------|--------|---|--------------|---------------|---------------|------------|-----------------|------------------|-----------------|-----------|---------------|
| #606        | 60mm   | 5 <sup>3</sup> / <sub>8</sub> " x 8 <sup>1</sup> / <sub>2</sub> " x 2 <sup>3</sup> / <sub>8</sub> " | 300          | 2,660 lbs     | 95            | •          | •               |                  |                 |           |               |

## Plaza 4 Circle

| Product No. | Height | Dimensions                                 | Units/Pallet | Pallet Weight | Sq.Ft./Pallet | Pedestrian | Light Vehicular | Medium Vehicular | Heavy Vehicular | Permeable | ADA Compliant |
|-------------|--------|--|--------------|---------------|---------------|------------|-----------------|------------------|-----------------|-----------|---------------|
| #637        | 60mm   | 6" x 12" x 2 <sup>3</sup> / <sub>8</sub> " | 300          | 2,660 lbs     | 95            | •          | •               |                  |                 |           |               |

## Luna

| Product No. | Height | Dimensions   | Units/Pallet | Pallet Weight | Sq.Ft./Pallet | Pedestrian | Light Vehicular | Medium Vehicular | Heavy Vehicular | Permeable | ADA Compliant |
|-------------|--------|--|--------------|---------------|---------------|------------|-----------------|------------------|-----------------|-----------|---------------|
| #110130     | 60mm   | 4 <sup>1</sup> / <sub>3</sub> " x 6" x 2 <sup>1</sup> / <sub>3</sub> " | 640          | 2,872 lbs     | 116           | •          |                 |                  |                 |           |               |

## Bullnose

| Product No. | Height | Dimensions                                 | Units/Pallet | Pallet Weight | Sq.Ft./Pallet | Pedestrian | Light Vehicular | Medium Vehicular | Heavy Vehicular | Permeable | ADA Compliant |
|-------------|--------|--|--------------|---------------|---------------|------------|-----------------|------------------|-----------------|-----------|---------------|
| #LBW6       | 60mm   | 6" x 12" x 2 <sup>3</sup> / <sub>8</sub> " | 208          | 2,375 lbs     | 104           | •          |                 |                  |                 |           |               |

## Eco-City Lock 5x10

| Product No. | Height | Dimensions                                 | Units/Pallet | Pallet Weight | Sq.Ft./Pallet | Pedestrian | Light Vehicular | Medium Vehicular | Heavy Vehicular | Permeable | ADA Compliant |
|-------------|--------|--|--------------|---------------|---------------|------------|-----------------|------------------|-----------------|-----------|---------------|
| #315        | 80mm   | 5" x 10" x 3 <sup>1</sup> / <sub>8</sub> " | 280          | 3,255 lbs     | 97            | •          | •               | •                | •               |           | •             |

## Eco-Panorama Demi

| Product No. | Height | Dimensions                                 | Units/Pallet | Pallet Weight | Sq.Ft./Pallet | Pedestrian | Light Vehicular | Medium Vehicular | Heavy Vehicular | Permeable | ADA Compliant |
|-------------|--------|--|--------------|---------------|---------------|------------|-----------------|------------------|-----------------|-----------|---------------|
| #366        | 80mm   | 4" x 8" x 3 <sup>1</sup> / <sub>8</sub> "  | 64           | 3,074 lbs     | 86            | •          | •               |                  |                 |           |               |
|             |        | 8" x 8" x 3 <sup>1</sup> / <sub>8</sub> "  | 64           |               |               |            |                 |                  |                 |           |               |
|             |        | 8" x 12" x 3 <sup>1</sup> / <sub>8</sub> " | 64           |               |               |            |                 |                  |                 |           |               |

## GrasStone II

| Product No. | Height | Dimensions  | Units/Pallet | Pallet Weight | Sq.Ft./Pallet | Pedestrian | Light Vehicular | Medium Vehicular | Heavy Vehicular | Permeable | ADA Compliant |
|-------------|--------|---|--------------|---------------|---------------|------------|-----------------|------------------|-----------------|-----------|---------------|
| #189        | 80mm   | 15 <sup>3</sup> / <sub>4</sub> " x 23 <sup>5</sup> / <sub>8</sub> " x 3 <sup>1</sup> / <sub>8</sub> " | 32           | 1,960 lbs     | 28            |            |                 |                  |                 |           |               |

# SPECIFICATIONS Walls

Retaining Walls  
Freestanding Walls  
Outdoor Living

## Harington 3 Pc.

| Product No. | Height | Width | Depth | Units/Pallet | Pallet Weight | Face Ft./Pallet |   |   |   |
|-------------|--------|-------|-------|--------------|---------------|-----------------|---|---|---|
| #876        | 6"     | 6"    | 12"   | 20           | 3,300 lbs     | 30              | • | • | • |
|             | 6"     | 12"   | 12"   | 20           |               |                 |   |   |   |
|             | 6"     | 18"   | 12"   | 20           |               |                 |   |   |   |

## Harington Freestanding 3 Pc.

| Product No. | Height | Width   | Depth | Units/Pallet | Pallet Weight | Face Ft./Pallet |   |   |   |
|-------------|--------|---------|-------|--------------|---------------|-----------------|---|---|---|
| #889        | 6"     | 6"/4"   | 9"    | 20           | 2,960 lbs     | 22              | • | • | • |
|             | 6"     | 12"/10" | 9"    | 20           |               |                 |   |   |   |
|             | 6"     | 18"/16" | 9"    | 20           |               |                 |   |   |   |

## Regal Stone Pro® RockFace

| Product No. | Height | Width | Depth | Units/Pallet | Pallet Weight | Face Ft./Pallet |   |  |  |
|-------------|--------|-------|-------|--------------|---------------|-----------------|---|--|--|
| #818        | 8"     | 18"   | 12"   | 32           | 2,880 lbs     | 32              | • |  |  |

## Regal Stone® Straight

| Product No. | Height | Width                            | Depth | Units/Pallet | Pallet Weight | Face Ft./Pallet |   |  |  |
|-------------|--------|----------------------------------|-------|--------------|---------------|-----------------|---|--|--|
| #822        | 6"     | 16 <sup>4</sup> / <sub>5</sub> " | 12"   | 45           | 3,240 lbs     | 31.5            | • |  |  |

## Rumbled Wall™

| Product No. | Height | Width | Depth | Units/Pallet | Pallet Weight | Face Ft./Pallet |   |   |   |
|-------------|--------|-------|-------|--------------|---------------|-----------------|---|---|---|
| #519        | 4"     | 16"   | 8"    | 70           | 2,870 lbs     | 31              | • | • | • |

## Nova Wall™

| Product No. | Height | Width | Depth | Units/Pallet | Pallet Weight | Face Ft./Pallet |   |   |   |
|-------------|--------|-------|-------|--------------|---------------|-----------------|---|---|---|
| #110199     | 3"     | 9"    | 12"   | 96           | 3,744 lbs     |                 | • | • | • |

# SPECIFICATIONS Caps & Corners

Note: Dimensions are nominal.

## 3" Rectangle Cap

| Product No. | Height | Width | Depth                            | Units/Pallet | Pallet Weight | Linear Ft./Pallet |
|-------------|--------|-------|----------------------------------|--------------|---------------|-------------------|
| #110819     | 3"     | 18"   | 13 <sup>1</sup> / <sub>2</sub> " | 48           | 2,784 lbs     | 72                |

## Harington Freestanding 3 Pc. Cap

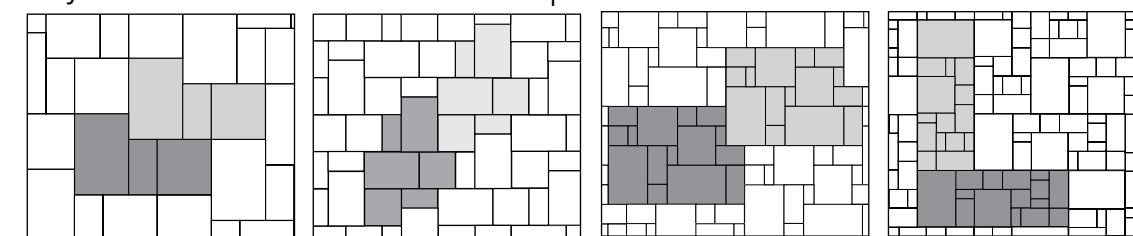
| Product No. | Height | Width | Depth | Units/Pallet | Pallet Weight | Linear Ft./Pallet |
|-------------|--------|-------|-------|--------------|---------------|-------------------|
| #110820     | 3"     | 18"   | 11.5" | 64           | 3,200 lbs     | 96                |

## Regal Stone® RockFace Corners

| Product No. | Height | Width | Depth | Units/Pallet | Pallet Weight | Linear Ft./Pallet |
|-------------|--------|-------|-------|--------------|---------------|-------------------|
| #110866     | 8"     | 18"   | 9"    | 40           | 4,120 lbs     | 60                |
| #110894     | 6"     | 18"   | 9"    | 40           | 3,120 lbs     | 45                |

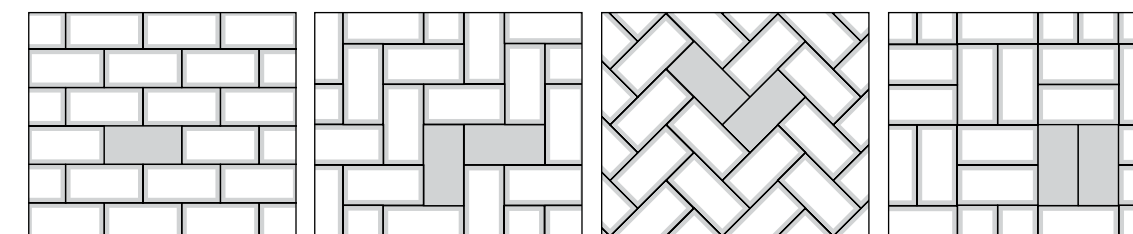
# POPULAR LAYING PATTERNS by Paver

## CityStone™ or Panorama™ Demi & Supra



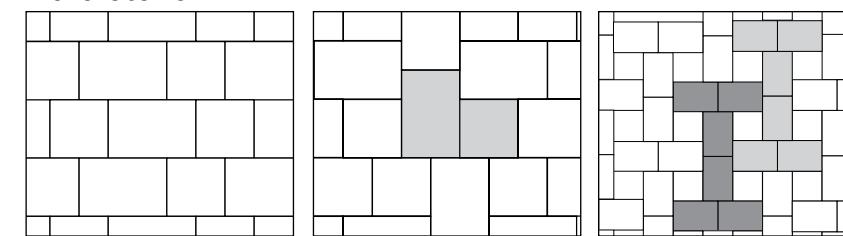
Demi or Supra Pattern 1    Demi or Supra Pattern 2    Demi/Supra Pattern 1  
Demi (30%), Supra (70%)    Demi/Supra Pattern 2  
Demi (50%), Supra (50%)

## Holland Stone



Runner Bond    90° Herringbone    45° Herringbone    Parquet

## Plaza Stone



Runner Bond    Muster "K"    "I" Pattern  
Rectangles (60%) Squares (40%)    Rectangles (69%) Squares (31%)    Rectangles (75%) Squares (25%)



## Product Warranty

LIMITED WARRANTY for the Contract Professional, Developer, or other Commercial Purchaser Keystone Hardscapes, having its headquarters located at Five Concourse Parkway, Atlanta, GA 30328, warrants its products at the time of delivery will meet or exceed the applicable ASTM standards on compressive strength and absorption if installed in accordance with applicable ICPI ([www.icpi.org](http://www.icpi.org)) or NCMA ([www.ncma.org](http://www.ncma.org)) standards. This warranty does not cover standard manufacturing variations, color variations/matching or efflorescence. Keystone Hardscapes is not responsible for installation of the product or defective conditions caused by installation, abuse, impact, abrasion or alteration of the product, earth-shifts, excessive or unforeseen site conditions, acts of God or application of de-icing salt or other chemicals to the product. Liability under this warranty, if the product is found to be defective, is limited to the replacement of the defective product, or at Keystone Hardscapes' option, the refund of the purchase price of the defective product. Keystone Hardscapes does not guarantee that the shape or color will be available in the future and will provide an alternate shape or color from its current product line as determined by Keystone Hardscapes at the time of an accepted warranty claim. This warranty is valid for the lifetime of the product. This warranty is transferable. In the event of a claim under this warranty, notice must be given to Keystone Hardscapes, together with original proof of purchase, at its headquarters by sending a letter to: Keystone Hardscapes a/s Warranties, Five Concourse Parkway, Atlanta, GA 30328. THIS WARRANTY IS ISSUED AND ACCEPTED IN LIEU OF ANY AND ALL OTHER EXPRESS OR IMPLIED WARRANTIES OF ANY KIND OR NATURE AND EXPRESSLY EXCLUDES LIABILITY FOR LABOR, FREIGHT AND OTHER COSTS ASSOCIATED WITH REMOVAL AND REPLACEMENT OF THE DEFECTIVE PRODUCT AND FOR INDIRECT AND CONSEQUENTIAL DAMAGES.

Due to variations in the printing and photographic processes, actual appearance and color of our products may differ from the appearance reflected in this website or in any of our brochures or other product literature and appearance and color may differ from one brochure or other product literature to the next. Please be advised that this warranty does not cover those appearance and color variations.

Once installed, our products are deemed accepted in terms of surface texture, shape, size, split face geometry, color, color blending and all other aesthetic features.



FOLLOW US     

## Where imagination and possibilities meet.

Keystone Hardscapes pavers and retaining walls are the building blocks that turn your ideas into realities. Dreaming of extending your living space with a backyard gathering area to entertain family and friends? From distinctive driveways to luxurious outdoor living designs, Keystone Hardscapes can help bring your vision to life.

Keystone Hardscapes is built on a commitment to beauty, design versatility and function.

Since the 1980s, our products have been installed in thousands of residential and commercial properties. Our innovative pavers, walls and outdoor living elements continue to be favorites of homeowners, contractors, designers and developers.

**Locally made products, nationally trusted brand.**

Manufactured at:

**BOSTON, MA**  
18 Cowan Drive  
Middleborough, MA 02346  
Phone: 508-947-6001

QUIKRETE and its subsidiaries (collectively QUIKRETE) reserve the right to improve its products and make changes to its specification and design without notice. The information contained herein has been compiled by QUIKRETE and to the best of its knowledge, accurately represents Keystone Hardscapes products and how it may be used in the applications which are illustrated. Site conditions, including load pressures acting on the wall, soil types and drainage conditions, may vary. Final determination of the suitability of the product for the use contemplated and the manner of product use are the sole responsibility of the user. Good construction practices and local building codes require the use of an engineered design when constructing retaining walls or freestanding walls in many conditions. Structural design and analysis should be provided by a qualified engineer.

©2023 The QUIKRETE Companies - Patents Pending. • KHS - 03/2023