



ROCKY MOUNTAIN CATALOG | Vol. IV
PAVERS | WALLS | OUTDOOR LIVING



Panorama™ Demi / Eddington Blend



Where imagination and possibilities meet.

Keystone Hardscapes pavers and retaining walls are the building blocks that turn your ideas into realities. Dreaming of extending your living space with a backyard gathering area to entertain family and friends? From distinctive driveways to luxurious outdoor living designs, Keystone Hardscapes can help bring your vision to life.

Keystone Hardscapes is built on a commitment to beauty, design versatility and function. Since the 1980s, our products have been installed in thousands of residential and commercial properties. Our innovative pavers, walls and outdoor living elements continue to be favorites of homeowners, contractors, designers and developers.










Locally made products, nationally trusted brand.

www.keystonehardscapes.com



Vintage Stone® / Antique Pewter

Application Key

PAVERS		WALLS	
Pedestrian		Retaining Walls	
Light Vehicular		Freestanding Walls	
Medium Vehicular		Outdoor Living	
Heavy Vehicular			
Permeable			
ADA Compliant			



06	GET INSPIRED
	Outdoor Living 6
	Driveways 12
	Poolside 16
23	PAVER COLLECTION
	Permeable Pavers
	Eco-CityLock® 24
	Grasstone™ II 25
	Pavers
	24" Square 26
	CityScape ADA 27
	CityStone™ 28
	CityStone™ XL 29
	Holland Stone 30
	Panorama™ Demi & Supra 32
	Plaza Stone - Rectangles & Squares 34
	Plaza Stone Circle 36
	Venetian® - Antiqued..... 38
	Vintage Stone® - Antiqued 40
43	WALL COLLECTION
	Structural Walls
	Regal Stone Pro® - RockFace 44
	Regal Stone Pro® - Straight 46
	Landscape Walls
	Harington® 3-pc 48
	Harington® Freestanding 3-pc 50
	Regal Stone® - RockFace 52
	Rumblestone® Collection 54
	Stonegate® 56
	Walls by Best Block
	Keystone Compac® - Stone Split & Victorian 58
	Keystone Compac® - Straight 60
	Legacy Stone® 62
	Wall Caps & Corners 64
67	OUTDOOR LIVING DESIGNS
	Fire Pits 68
	Stonegate® 69
71	RESOURCES
	Color Matrix 72
	Product Specifications 73
	Laying Patterns 77
	Accessories 79





Vintage Stone® / Winter Blend & Harington® Fire Pit



Plaza Stone / Three Tone Brown



Venetian® - Antiqued / Buff/Charcoal





Panorama™ Supra / Eddington Blend & Harington® 3-pc / Tan Brown



Outdoor Living



Venetian® / Antique Terra Cotta



Panorama™ Demi & Supra / Platte River Blend & Harington® Freestanding / Tan Brown



Holland Stone / Charcoal



Driveways



Panorama™ Demi / Platte River Blend (sealed with wet look sealer)



Driveways



Venetian® - Antiqued / Three Tone Brown



Venetian® - Antiqued / Buff/Charcoal



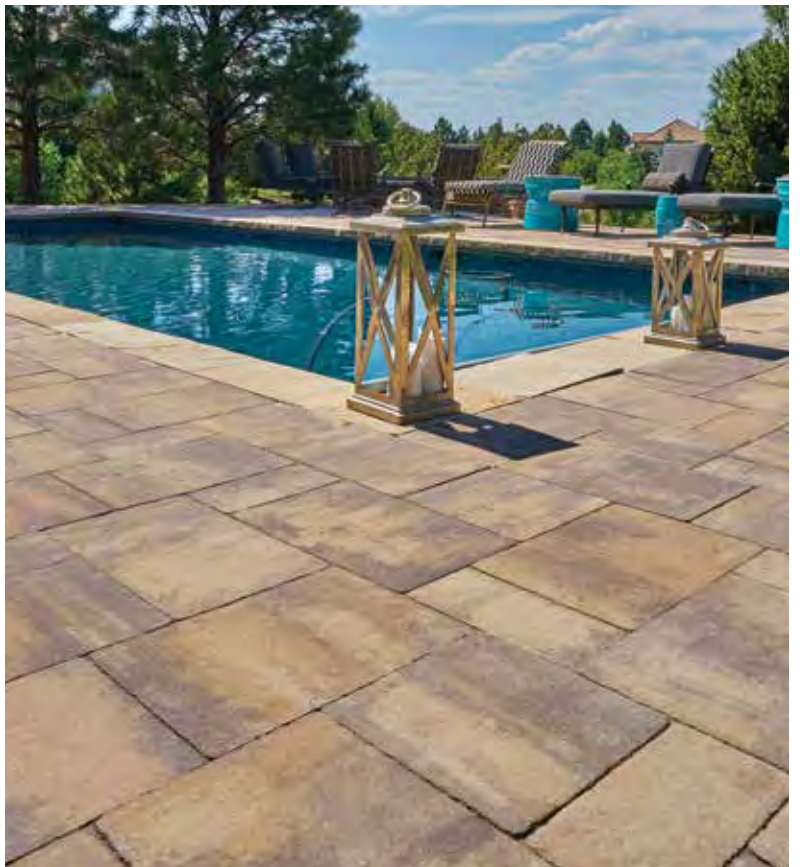
Plaza Stone / Three Tone Brown



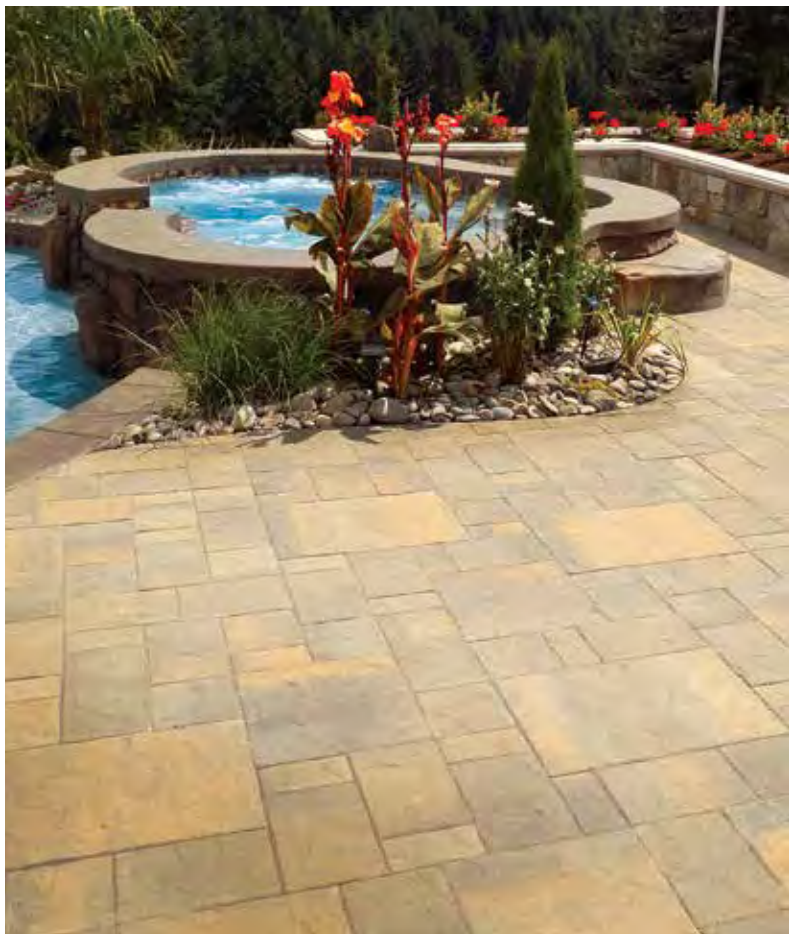
Poolside



Venetian® - Antiqued / Three Tone Brown



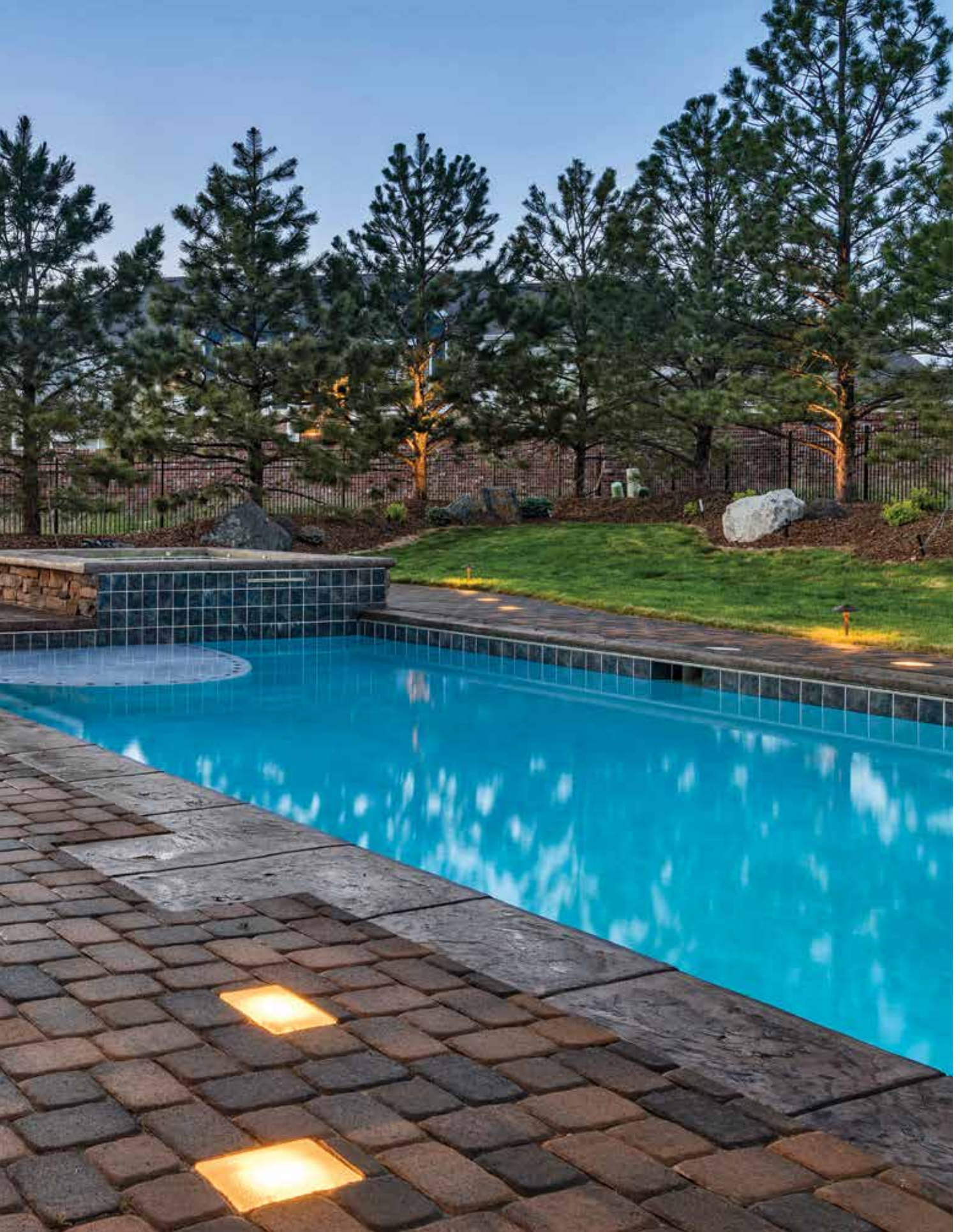
Sunset Blend



Panorama™ Demi & Supra / Platte River Blend



Poolside



Plaza Stone / Three Tone Brown



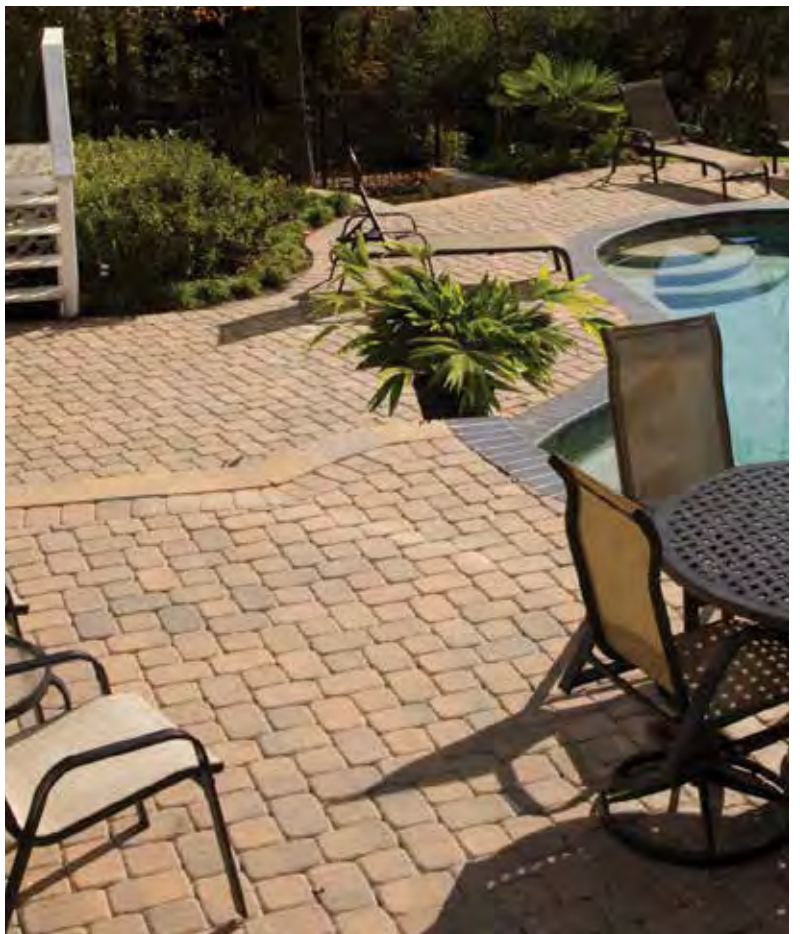
Poolside



Venetian® - Antiqued / Winter Blend



Panorama™ Supra / Eddington Blend



Plaza Stone / Three Tone Brown



Panorama™ Supra Pavers & Harington® Freestanding 3-pc Wall / (special order colors)

Available Finishes



STANDARD
Classic, through-mix
surface



ANTIQUED
Worn and gracefully aged



PLATINUM
Facemix design offers
superior color,
texture and endurance

Permeable Pavers

Eco-CityLock®	24
Grasstone™ II	25

Pavers

24" Square	26
CityScape ADA	27
CityStone™	28
CityStone™ XL	29
Holland Stone	30
Panorama™ Demi & Supra	32
Plaza Stone - Rectangles & Squares	34
Plaza Stone Circle	36
Venetian® - Antiqued.....	38
Vintage Stone® - Antiqued	40

Easily estimate how much product you need at:
www.pavestone-estimator.com/denver



Vintage Stone® / Three Tone Brown

ECO-CITYLOCK®

5x10



A modular permeable paver system with contemporary aesthetics, delivering a sustainable, pervious pavement surface.



Winter Blend

Colors printed here are as true a match as the printing process will allow. For best matching results, please refer to actual samples.
Not all products & colors are available in every plant.



#315
5" x 10" x 3 1/8"



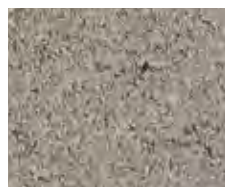
GRASSTONE™ II



This grid paver permits water infiltration and establishes vegetation while creating a suitable platform for intermittent light vehicular use.



Light Brown
Denver only



Pewter
Fountain only

Colors printed here are as true a match as the printing process will allow. For best matching results, please refer to actual samples.
Not all products & colors are available in every plant.



#189
23⁵/₈" x 15³/₄" x 3¹/₈"



24" SQUARE



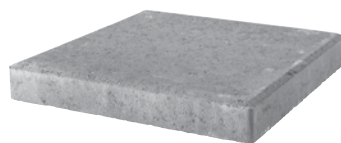
Concrete step stones instantly add beauty and value to any landscape.



Charcoal

Pewter

Colors printed here are as true a match as the printing process will allow. For best matching results, please refer to actual samples.
Not all products & colors are available in every plant.

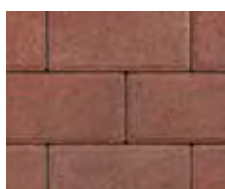


#737
24" x 24" x 2"

CITYSCAPE ADA Detectable Warning Paver

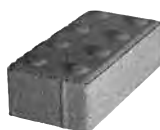


Provides visual and textural guidance provisions for wheelchair and pedestrian access to streets, sidewalks for public right of way.



River Red

Colors printed here are as true a match as the printing process will allow. For best matching results, please refer to actual samples.
Not all products & colors are available in every plant.

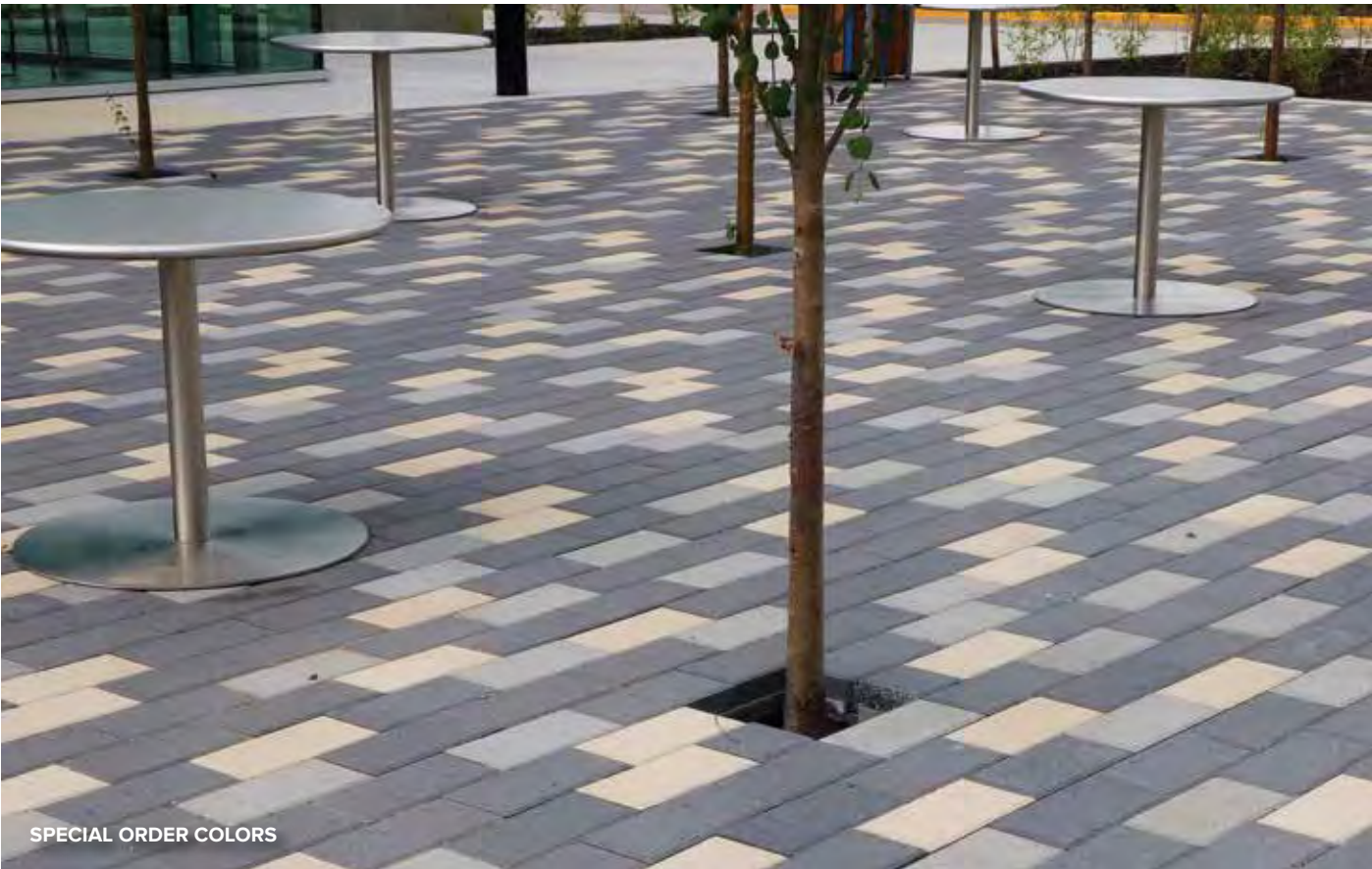


#200
3¹⁵/₁₆" x 7⁷/₈" x 2³/₈"

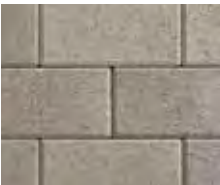
CITYSTONE™



The smooth surface and classic chamfers of CityStone artfully define each paver; creating texture and visual appeal.



SPECIAL ORDER COLORS



Antique Pewter



Steamboat Blend

... While supplies last ...

Colors printed here are as true a match as the printing process will allow. For best matching results, please refer to actual samples.
Not all products & colors are available in every plant.



#287 - 6x12
5¹⁵/₁₆" x 11¹³/₁₆" x 2³/₈"



#380 - 3x12
2¹⁵/₁₆" x 11¹³/₁₆" x 2³/₈"

CITYSTONE™ XL



A popular choice for a modern aesthetic, CityStone XL series provides large format pavers with dimensionally compatible sizes.

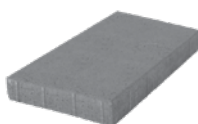


Gunsmoke

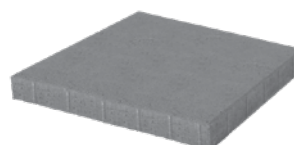
Colors printed here are as true a match as the printing process will allow. For best matching results, please refer to actual samples.
Not all products & colors are available in every plant.



#277 - 12x12^{1,2}
12" x 12" x 2³/₈"



#384 - 12x24¹
12" x 24" x 2³/₈"



#385 - 24x24¹
24" x 24" x 2³/₈"



CHARCOAL

Holland Stone offers the charm and versatility of a simple rectangular shape. From simplistic to intricate, pattern options are almost endless. Maximize design potential by combining pattern and color options.



HOLLAND STONE



THREE TONE BROWN



Charcoal



Old Town Blend



Three Tone Brown



Winter Blend

Colors printed here are as true a match as the printing process will allow. For best matching results, please refer to actual samples.
Not all products & colors are available in every plant.



#217

3¹⁵/₁₆" x 7⁷/₈" x 2³/₈"



EDDINGTON BLEND

Let this six-piece series bring your next hardscape design to life with sophistication and style. Panorama Demi & Supra can also be installed as two stand-alone three-piece paving systems.



PANORAMA™

Demi & Supra



1

2



PLATTE RIVER BLEND



Eddington Blend



Platte River Blend



Sunset Blend



Travertine

Colors printed here are as true a match as the printing process will allow. For best matching results, please refer to actual samples.
Not all products & colors are available in every plant.



4x8
3¹⁵/₁₆" x 7⁷/₈" x 2³/₈"



8x16
7⁷/₈" x 15³/₄" x 2³/₈"



8x8
7⁷/₈" x 7⁷/₈" x 2³/₈"



16x16
15³/₄" x 15³/₄" x 2³/₈"



8x12
7⁷/₈" x 11¹³/₁₆" x 2³/₈"



16x24
15³/₄" x 23⁵/₈" x 2³/₈"

#367 Demi - Bundle^{1,2}

#368 Supra - Bundle¹



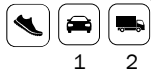
WINTER BLEND

Plaza Stone creates a welcoming effect with its "pillow top" surface and soft curved edges. The classic square and rectangle shapes make this a versatile paving system for both commercial and residential settings.



PLAZA STONE

Rectangles & Squares



Eddington Blend



Three Tone Brown*



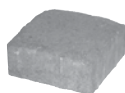
Winter Blend



Antique Terra Cotta
..... Fountain only

Colors printed here are as true a match as the printing process will allow. For best matching results, please refer to actual samples.
Not all products & colors are available in every plant.

*Three Tone Brown not available for Giant



#646 - Square^{1,2}
5½" x 5½" x 2⅜"



#606 - Rectangle¹
5½" x 8¼" x 2⅜"



#649 - Giant¹
8¼" x 11" x 2⅜"



SPECIAL ORDER COLORS

Add design distinction to an outdoor space with the multi-shape Plaza Stone Circle. This circle pack can be combined any other Plaza Stone paver to extend the visual impact and appeal of your project.



PLAZA STONE

Circle



ANTIQUE TERRA COTTA & ANTIQUE PEWTER (SPECIAL ORDER COLORS)



Winter Blend

Colors printed here are as true a match as the printing process will allow. For best matching results, please refer to actual samples.
Not all products & colors are available in every plant.



A - Center
5½" x 2¾" x 2⅜"



B - Wedge
5½" x 6⅜" x 2⅜"



C - Trap
5½" x 4½" x 2⅜"



D - Twinkie
5½" x 2¾" x 2⅜"



E - ¼ Square
5½" x 4⅛" x 2⅜"

#637 Bundle



THREE TONE BROWN

A uniquely attractive textured surface sets Venetian apart from ordinary pavers, allowing for a dynamic interaction with sunlight and evoking the timeless beauty of flagstone. They are ideal for residential and commercial applications.

VENETIAN®

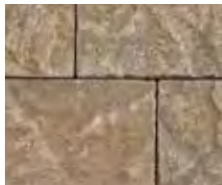
Antiqued



1



BUFF/CHARCOAL



Buff/Charcoal



Winter Blend*

*Winter Blend also available in non-antiqued.

Colors printed here are as true a match as the printing process will allow. For best matching results, please refer to actual samples.
Not all products & colors are available in every plant.



Three Tone Brown
Denver only



Antique Terra Cotta
Fountain only



6x6
5¹⁵/₁₆" x 5¹⁵/₁₆" x 2³/₈"



6x9
5¹⁵/₁₆" x 8⁷/₈" x 2³/₈"



#269T - 6x12¹
5¹⁵/₁₆" x 11¹³/₁₆" x 2³/₈"



#270T - 12x12¹
11¹³/₁₆" x 11¹³/₁₆" x 2³/₈"



#265T - 12x18
11³/₄" x 17⁵/₈" x 2³/₈"

#267T Bundle¹



WINTER BLEND

The Vintage Stone product line delivers scale, color, and modular design options for unique pavement expression. Its random pattern creates an infinite number of impression possibilities, making it one of the most popular pavers.



VINTAGE STONE®

Antiqued



THREE TONE BROWN

#293T Bundle Color



Eddington Blend

#280T 9x9 and #291T Bundle Colors



Antique Pewter



Winter Blend



Three Tone Brown
Denver only
(#280T, #291T & #292T)

#292T 6x9 Colors



Antique Pewter



Charcoal



Winter Blend

Colors printed here are as true a match as the printing process will allow. For best matching results, please refer to actual samples.
Not all products & colors are available in every plant.



3x6
2¹⁵/₁₆" x 5¹⁵/₁₆" x 2³/₈"



6x6
5¹⁵/₁₆" x 5¹⁵/₁₆" x 2³/₈"

#291T Bundle



3x6
2¹⁵/₁₆" x 5¹⁵/₁₆" x 2³/₈"



6x6
5¹⁵/₁₆" x 5¹⁵/₁₆" x 2³/₈"



6x9
5¹⁵/₁₆" x 8⁷/₈" x 2³/₈"

#293T Bundle



#292T - 6x9
5¹⁵/₁₆" x 8⁷/₈" x 2³/₈"



#280T - 9x9
8⁷/₈" x 8⁷/₈" x 2³/₈"



Stonegate® / Special Order Color

Structural Walls

Regal Stone Pro® - RockFace	44
Regal Stone Pro® - Straight	46

Landscape Walls

Harington® 3-pc	48
Harington® Freestanding 3-pc	50
Regal Stone® - RockFace	52
Rumblestone® Collection	54
Stonegate®	56

Walls by Best Block

Keystone Compac® - Stone Split & Victorian	58
Keystone Compac® - Straight	60
Legacy Stone®	62

Wall Caps & Corners	64
---------------------------	----

Easily estimate how much product you need at:
www.pavestone-estimator.com/denver



Harington® Freestanding 3-pc / Winter Blend



PRAIRIE BROWN

Regal Stone Pro - RockFace produces the latest look and appeal in architectural design. Its use of multiple shape patterning and alternating scale create new and innovative application potential for site work design.



REGAL STONE PRO®

RockFace



Antique Pewter



Prairie Brown

Colors printed here are as true a match as the printing process will allow. For best matching results, please refer to actual samples.
Not all products & colors are available in every plant.

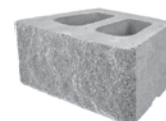
See page 65 for cap and corner options.



Small
8" x 7" x 12"



Medium
8" x 11" x 12"



#818N - Large
8" x 18" x 12"

#833N 2-pc Bundle



LIGHT BROWN

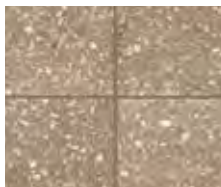
Regal Stone Pro - Straight takes retaining wall construction to a higher level with its rear lip design and larger face profile creating flexible, cost-effective solutions for commercial, municipal, and residential projects.

REGAL STONE PRO®

Straight



Buff



Light Brown

Colors printed here are as true a match as the printing process will allow. For best matching results, please refer to actual samples.
Not all products & colors are available in every plant.

See page 65 for cap and corner options.



#827N
8" x 18" x 12"



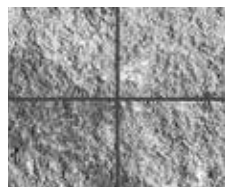
TAN BROWN

The Harington 3-piece wall system evokes the look and feel of natural hand-hewn stone, making a striking design statement while the rear lip feature eliminates setback and alignment issues to speed construction.

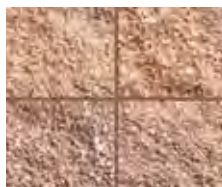


HARINGTON®

3-pc



Antique Pewter



Tan Brown



Winter Blend

Colors printed here are as true a match as the printing process will allow. For best matching results, please refer to actual samples.
Not all products & colors are available in every plant.

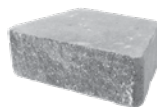
See page 65 for cap options.



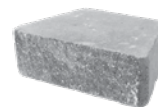
Small
6" x 6" x 12"



Medium
6" x 12" x 12"



Large
6" x 18" x 12"



#883 - Large
6" x 18" x 12"



#110894
6" Straight Corner
6" x 18" x 9"

#876 Bundle

Tan Brown



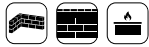
TAN BROWN

The Harington Freestanding 3-piece wall is crafted in compelling colors and rough-hewn textures. Create curved or straight freestanding walls, columns, outdoor kitchens and fire features with this versatile system.



HARINGTON®

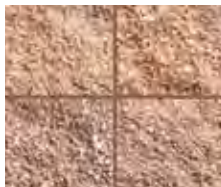
Freestanding 3-pc



SPECIAL ORDER COLOR BLEND



Antique Pewter



Tan Brown



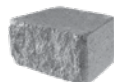
Winter Blend

Colors printed here are as true a match as the printing process will allow. For best matching results, please refer to actual samples.
Not all products & colors are available in every plant.

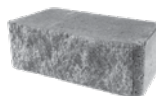
See page 65 for cap options.



Small
6" x 6"/4" x 9"



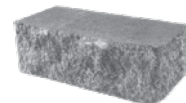
Medium
6" x 12"/10" x 9"



Large
6" x 18"/16" x 9"



#891 - Small
6" x 6"/4" x 9"



#110894
6" Straight Corner
6" x 18" x 9"

#889 Bundle



ANTIQUE PEWTER

With the authentic look of timeworn stone, the Regal Stone - RockFace is both attractive and bold. The rough-hewn face creates walls that are pleasing and functional while the rear lip ensures proper alignment and a precise setback.



REGAL STONE®

RockFace



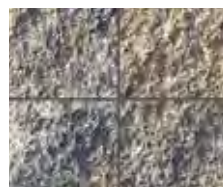
ANTIQUE PEWTER



Antique Pewter



Canyon Blend



Eddington Blend

Colors printed here are as true a match as the printing process will allow. For best matching results, please refer to actual samples.
Not all products & colors are available in every plant.



#823
6" x 16⁴/₅" x 12"



CAFÉ

The RumbleStone Collection is a set of rustic-style building blocks for your outdoor hardscape projects. The various unit sizes can be assembled in an endless variety of configurations and orientations.

RUMBLESTONE®

Collection



Café



Greystone



Winter Blend

Colors printed here are as true a match as the printing process will allow. For best matching results, please refer to actual samples.
Not all products & colors are available in every plant.



#913 - Mini
3½" x 7" x 1¾"



#917 - Medium
7" x 7" x 3½"



#919 - Large
7" x 10½" x 3½"



#921 - Jumbo
7" x 14" x 3½"



#923 - Trapezoid
7" x 6½"/10¼" x 3½"



ANTIQUE PEWTER

Reminiscent of the charming walls of the European countryside, Keystone's Stonegate features a smoothly weathered stone appearance, perfect for outdoor living projects, freestanding and retaining walls.



STONEGATE®



Antique Pewter



Steamboat Blend

Colors printed here are as true a match as the printing process will allow. For best matching results, please refer to actual samples.
Not all products & colors are available in every plant.

Product available in untumbled and tumbled.



Small
6" x 6"/4" x 10"



Medium
6" x 12"/10" x 10"



Large
8" x 16"/14" x 10"



#110177 - Cap
3" x 12" x 11"

#110176 Bundle



VICTORIAN ASHLAR / SIERRA BLEND

Leveraging the Keystone Compac III unit design, the Keystone Stone Split and Victorian Ashlar Series provide unique aesthetic options with cost-saving versatility and unrivaled wall performance.

KEYSTONE COMPAC®

Stone Split & Victorian



STONE SPLIT / SIERRA BLEND



Colorado Blend



Sierra Blend

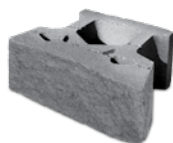
Stone Split



Sierra Blend
Victorian Ashlar

Colors printed here are as true a match as the printing process will allow. For best matching results, please refer to actual samples.
Not all products & colors are available in every plant.

See page 65 for cap and corner options.



#WSS2
Stone Split
8" x 18" x 12"



#WVI2
Victorian
8" x 18" x 12"



#WVIS2
Victorian Score
8" x 18" x 12"



#WVI42
Half High
4" x 18" x 12"

Victorian Ashlar Series



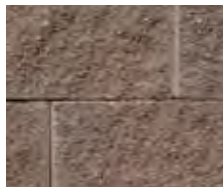
BROWN

Featuring unrivaled aesthetic options, cost-saving versatility and proven performance, installers prefer the Compac's lighter weight, shorter tail design and proven pin connection.



KEYSTONE COMPAC®

Straight



Brown



Gray



Tan

Colors printed here are as true a match as the printing process will allow. For best matching results, please refer to actual samples.
Not all products & colors are available in every plant.

See page 65 for cap and corner options.



#WIN2 - Straight
8" x 18" x 12"



LEDGESTONE / TAN/GRAY



HEWNSTONE / TAN/GRAY

Available in multiple face styles, Keystone's Legacy Stone is a favorite of both contractors and homeowners. It is ideal for small to medium gravity walls up to 3 feet in height, tiered walls, planters, tree rings, and garden borders.

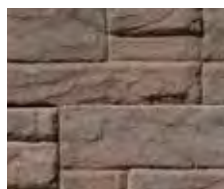
LEGACY STONE®



STONE SPLIT / STONEHENGE



Tan Gray
Hewnstone & Cap



Tan Gray
Ledgestone & Cap



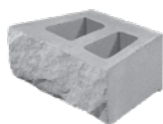
Sierra Blend



Stonehenge

Stone Split & Cap

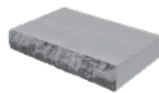
Colors printed here are as true a match as the printing process will allow. For best matching results, please refer to actual samples.
Not all products & colors are available in every plant.



#WLH9
Hewnstone
6" x 16" x 11"



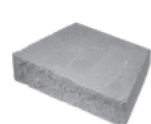
#WLLEDGE
Ledgestone
6" x 16" x 11"



#WLHC9
2 1/2" Cap
2 1/2" x 16" x 8"



#WLSS2
Stone Split
6" x 16" x 10"



#WLCAP
3" Cap
3" x 12"/16" x 11 1/4"

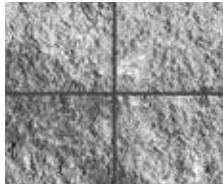


TAN BROWN

Add the perfect finishing details with wall caps and corners. The smaller scale of the cap combines with the larger scale wall unit to give the completed installation a distinctive and professionally rendered appearance.

WALL CAPS & CORNERS

#110819 - 3" Rectangle Cap



Antique Pewter



Canyon Blend



Eddington Blend

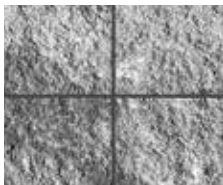


Tan Brown



Winter Blend

#831 - 4" Rectangle Cap



Antique Pewter

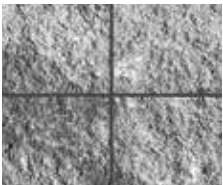


Buff



Light Brown

#110894 - 6" Straight Corner



Antique Pewter

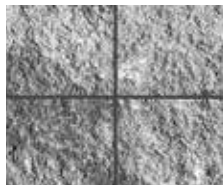


Tan Brown



Winter Blend

#WBSRW - 8" Straight Corner



Antique Pewter



Buff

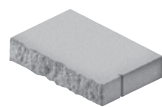


Light Brown

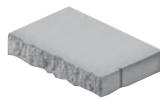


Prairie Brown

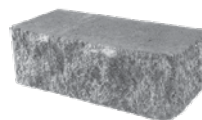
Colors printed here are as true a match as the printing process will allow. For best matching results, please refer to actual samples.
Not all products & colors are available in every plant.



#110819
3" Rectangle Cap
3" x 18" x 13½"



#831
4" Rectangle Cap
4" x 18" x 10½"



#110894
6" Straight Corner
6" x 18" x 9"



#WBSRW
8" Straight Corner
8" x 18" x 12"



Rumblestone® Square Fire Pit / Café



Contents

67	OUTDOOR LIVING DESIGNS
Fire Pits	68
Stonegate®	69



Harington® Fire Pit (caps not included in fire pit kit)

FIRE PITS

Round: Harington® Small Kit



Adobe Blend Winter Blend



Dimensions	Included	Product Number
Inside Diameter: 24" Outside Diameter: 48"	2 layers = 44 pieces of Harington small, (1) 24" round insert with grate	#496-RPT

Rumblestone® Collection



Café Greystone Winter Blend

Refer to page 75 for Rumblestone product specifications.

Round Fire Pit



Product	Pieces per pallet
Mini	36
Trapezoid	36

Round insert - 1x31/7



Mini Trapezoid

Square Fire Pit



Product	Pieces per pallet
Mini	24
Medium	12
Large	24

Square insert - 417.RJT-IQ-23/8
Grate - 417.RJT-IQ-A



Mini Medium Large

WARNING:
Combustion byproducts produced when using this product include carbon monoxide, a chemical known to the State of California to cause birth defects or other reproductive harm.

Colors printed here are as true a match as the printing process will allow. For best matching results, please refer to actual samples.
Not all products & colors are available in every plant.



Visit www.keystonehardscapes.com for more outdoor living inspiration and designs that can be created with Stonegate®.



Benches



Columns



Fire Pits

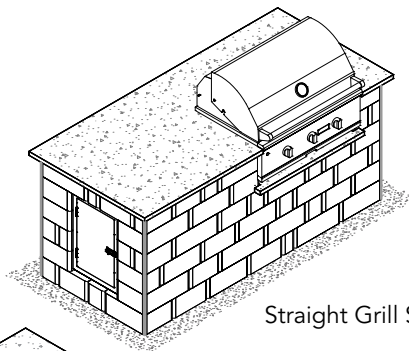


Outdoor Kitchens

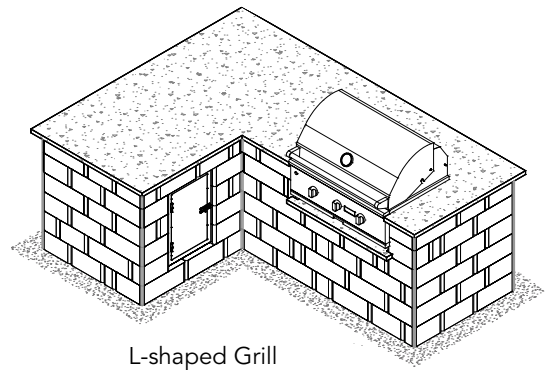


Fireplaces

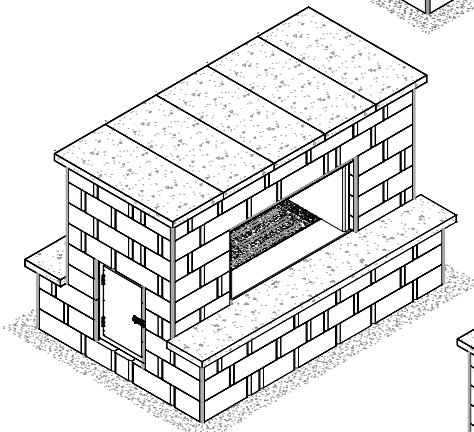
No-Cut Designs • Full Pallet • Less Labor • Easy Installation • Increase Profits



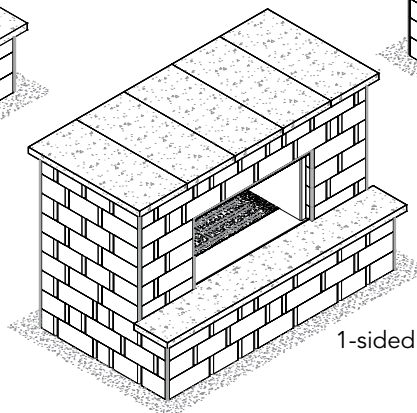
Straight Grill Station



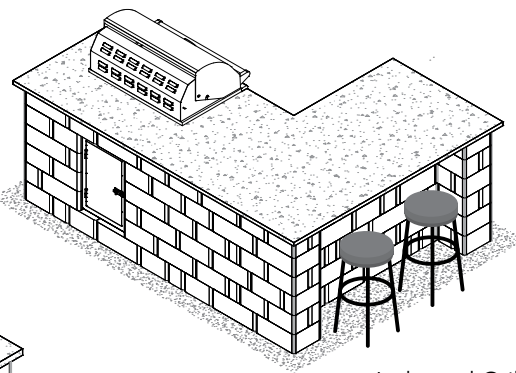
L-shaped Grill Station - without seating



2-sided Fireplace



1-sided Fireplace



L-shaped Grill Station - with seating



Keystone Compac® - Stone Split / Sierra Blend



Contents

71	RESOURCES
	Color Matrix 72
	Product Specifications 73
	Laying Patterns 77
	Accessories 79



COLOR MATRIX

This color matrix serves as a guide for color selection across product lines.

	Adobe Blend	Antique Pewter	Antique Terra Cotta	Brown	Buff	Buff/Charcoal	Café	Canyon Blend	Charcoal	Colorado Blend	Eddington Blend	Gray	Greystone	Gunsmoke	Light Brown	Old Town Blend	Pewter	Platte River Blend	Prairie Brown	River Red	Sierra Blend	Steamboat Blend	Stonehenge	Sunset Blend	Tan	Tan Brown	Tan Grey	Three Tone Brown	Travertine	Winter Blend	
PAVER COLLECTION																															
Eco-CityLock®																														•	
Grasstone™ II															D		F														
24" Square									•								•														
Bullnose																															
CityScape ADA																				•											
CityStone™ (287, 380)		•																				LA									
CityStone™ XL													•																		
Holland Stone									•							•												•		•	
Panorama™ Demi & Supra											•							•						•					•		
Plaza Stone (646, 606)			F								•																	•		•	
Plaza Stone Giant			F								•																			•	
Plaza Stone Circle																														•	
Venetian® - Antiqued			F			•																						D		•	
Vintage Stone® - Antiqued (293T)											•																				
Vintage Stone® - Antiqued (292T)		•							•																			D		•	
Vintage Stone® - Antiqued (280T & 291T)		•																										D		•	
WALL COLLECTION																															
Regal Stone® Pro - RockFace		•																	•												
Regal Stone® Pro - Straight					•										•																
Harington® 3-pc		•																								•				•	
Harington® Freestanding 3-pc		•																								•				•	
Regal Stone® - RockFace		•						•			•																				
Rumblestone® Collection							•						•																	•	
Stonegate®		•																				•									
Keystone Compac® - Stone Split										•											•										
Keystone Compac® - Straight				•								•													•						
Keystone Compac® - Victorian																					•										
Legacy Stone® - Hewnstone																											•				
Legacy Stone® - Ledgestone																											•				
Legacy Stone® - Stone Split																					•		•								
WALL CAPS & CORNERS																															
3" Rectangle Cap		•						•			•										•		•			•				•	
4" Rectangle Cap		•		•	•							•			•						•				•						
6" Straight Corner		•																								•				•	
8" Straight Corner		•		•	•							•			•				•		•				•						
OUTDOOR LIVING ITS																															
Harington® Fire Pit	•												•																	•	
Rumblestone® Fire Pits							•						•																	•	

LA = Limited Availability D = Available in **Denver** Only F = Available in **Fountain** Only

SPECIFICATIONS Pavers

Suitable For:					
PEDESTRIAN	LIGHT VEHICULAR	MEDIUM VEHICULAR	HEAVY VEHICULAR	PERMEABLE	ADA COMPLIANT

Eco-CityLock®

Product No.	Height	Dimensions	Units/Pallet	Pallet Weight	Sq.Ft./Pallet	PEDESTRIAN	LIGHT VEHICULAR	MEDIUM VEHICULAR	HEAVY VEHICULAR	PERMEABLE	ADA COMPLIANT
#315	80mm	5" x 10" x 3 1/8"	280	3,400 lbs	97	•	•	•	•	•	•

Grasstone™ II

Product No.	Height	Dimensions	Units/Pallet	Pallet Weight	Sq.Ft./Pallet	PEDESTRIAN	LIGHT VEHICULAR	MEDIUM VEHICULAR	HEAVY VEHICULAR	PERMEABLE	ADA COMPLIANT
#189	80mm	23 5/8" x 15 3/4" x 3 1/8"	32	1,890 lbs	84	•	•			•	

24" Square

Product No.	Height	Dimensions	Units/Pallet	Pallet Weight	Sq.Ft./Pallet	PEDESTRIAN	LIGHT VEHICULAR	MEDIUM VEHICULAR	HEAVY VEHICULAR	PERMEABLE	ADA COMPLIANT
#737	50mm	24" x 14" x 2"	28	2,564 lbs	112	•					

CityScape ADA

Product No.	Height	Dimensions	Units/Pallet	Pallet Weight	Sq.Ft./Pallet	PEDESTRIAN	LIGHT VEHICULAR	MEDIUM VEHICULAR	HEAVY VEHICULAR	PERMEABLE	ADA COMPLIANT
#200	60mm	3 15/16" x 7 7/8" x 2 3/8"	480	2,800 lbs	103		•				•

CityStone™ 3x12

Product No.	Height	Dimensions	Units/Pallet	Pallet Weight	Sq.Ft./Pallet	PEDESTRIAN	LIGHT VEHICULAR	MEDIUM VEHICULAR	HEAVY VEHICULAR	PERMEABLE	ADA COMPLIANT
#380	60mm	2 15/16" x 11 13/16" x 2 3/8"	440	2,983 lbs	107	•	•				

CityStone™ 6x12

Product No.	Height	Dimensions	Units/Pallet	Pallet Weight	Sq.Ft./Pallet	PEDESTRIAN	LIGHT VEHICULAR	MEDIUM VEHICULAR	HEAVY VEHICULAR	PERMEABLE	ADA COMPLIANT
#287	60mm	5 15/16" x 11 13/16" x 2 3/8"	200	2,688 lbs	96	•	•				

CityStone™ XL

Product No.	Height	Dimensions	Units/Pallet	Pallet Weight	Sq.Ft./Pallet	PEDESTRIAN	LIGHT VEHICULAR	MEDIUM VEHICULAR	HEAVY VEHICULAR	PERMEABLE	ADA COMPLIANT
#277	60mm	12" x 12" x 2 3/8"	120	3,240 lbs	120	•	•				
#384	60mm	12" x 24" x 2 3/8"	60	3,255 lbs	116	•					
#385	60mm	24" x 24" x 2 3/8"	20	2,240 lbs	80	•					

Holland Stone

Product No.	Height	Dimensions	Units/Pallet	Pallet Weight	Sq.Ft./Pallet	PEDESTRIAN	LIGHT VEHICULAR	MEDIUM VEHICULAR	HEAVY VEHICULAR	PERMEABLE	ADA COMPLIANT
#217	60mm	3 15/16" x 7 7/8" x 2 3/8"	480	2,900 lbs	103	•	•				

Panorama™ Demi & Supra

Product No.	Height	Dimensions	Units/Pallet	Pallet Weight	Sq.Ft./Pallet	PEDESTRIAN	LIGHT VEHICULAR	MEDIUM VEHICULAR	HEAVY VEHICULAR	PERMEABLE	ADA COMPLIANT
#367 Demi	60mm	3 15/16" x 7 7/8" x 2 3/8"	80	2,934 lbs	103	•	•				
	60mm	7 7/8" x 7 7/8" x 2 3/8"	80								
	60mm	7 7/8" x 11 13/16" x 2 3/8"	80								
#368 Supra	60mm	7 7/8" x 15 3/4" x 2 3/8"	20	2,934 lbs	103	•					
	60mm	15 3/4" x 15 3/4" x 2 3/8"	20								
	60mm	15 3/4" x 23 5/8" x 2 3/8"	20								

Plaza Stone Rectangles & Squares







Product No.	Height	Dimensions	Units/Pallet	Pallet Weight	Sq.Ft./Pallet	PEDESTRIAN	LIGHT VEHICULAR	MEDIUM VEHICULAR	HEAVY VEHICULAR	PERMEABLE	ADA COMPLIANT
#646	60mm	5 1/2" x 5 1/2" x 2 3/8"	480	2,850 lbs	100	•	•	•			
#606	60mm	5 1/2" x 8 1/4" x 2 3/8"	300	2,650 lbs	95	•	•				
#649	60mm	8 1/4" x 11" x 2 3/8"	160	2800 lbs	101	•	•				

Note: Dimensions are nominal.


SPECIFICATIONS Pavers

Suitable For:					
PEDESTRIAN	LIGHT VEHICULAR	MEDIUM VEHICULAR	HEAVY VEHICULAR	PERMEABLE	ADA COMPLIANT







Plaza Stone Circle

Product No.	Height	Dimensions	Units/Pallet	Pallet Weight	Sq.Ft./Pallet						
#637	A	5½" x 2¾" x 2⅜"	10	2,200 lbs	84	•	•				
	B	5½" x 6⅜" x 2⅜"	20								
	C	5½" x 4½" x 2⅜"	280								
	D	5½" x 2¾" x 2⅜"	10								
	E	5½" x 4⅛" x 2⅜"	220								

Venetian® - Antiqued

Product No.	Height	Dimensions	Units/Pallet	Pallet Weight	Sq.Ft./Pallet						
#267T	60mm	5 ¹⁵ / ₁₆ " x 5 ¹⁵ / ₁₆ " x 2⅜"	100	2,730 lbs	95	•	•				
	60mm	5 ¹⁵ / ₁₆ " x 8⅞" x 2⅜"	200								
#269T	60mm	5 ¹⁵ / ₁₆ " x 11 ¹³ / ₁₆ " x 2⅜"	200	2,770 lbs	96	•	•				
#270T	60mm	11 ¹³ / ₁₆ " x 11 ¹³ / ₁₆ " x 2⅜"	120	3,200 lbs	120	•	•				
#265H	60mm	11 ¹³ / ₁₆ " x 17¾" x 2⅜"	60	2,500 lbs	90	•					

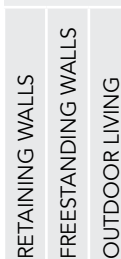
Vintage Stone® - Antiqued

Product No.	Height	Dimensions	Units/Pallet	Pallet Weight	Sq.Ft./Pallet						
#293T	60mm	2 ¹⁵ / ₁₆ " x 5 ¹⁵ / ₁₆ " x 2⅜"	160	3,248 lbs	116	•	•				
	60mm	5 ¹⁵ / ₁₆ " x 5 ¹⁵ / ₁₆ " x 2⅜"	160								
	60mm	5 ¹⁵ / ₁₆ " x 8⅞" x 2⅜"	160								
#292T	60mm	5 ¹⁵ / ₁₆ " x 8⅞" x 2⅜"	250	2,575 lbs	90	•	•				
#291T	60mm	2 ¹⁵ / ₁₆ " x 5 ¹⁵ / ₁₆ " x 2⅜"	240	2,850 lbs	106	•	•				
	60mm	5 ¹⁵ / ₁₆ " x 5 ¹⁵ / ₁₆ " x 2⅜"	320								
#280T	60mm	8⅞" x 8⅞" x 2⅜"	200	3,130 lbs	110	•	•				

Note: Dimensions are nominal.

SPECIFICATIONS Walls

Suitable For:



Regal Stone Pro® RockFace 2pc

Product No.	Height	Width	Depth	Units/Pallet	Pallet Weight	Face Ft./Pallet			
#833N	Small	8"	7"	45	3,675 lbs	45	•		
	Medium	8"	11"	45					

Regal Stone Pro® RockFace

Product No.	Height	Width	Depth	Units/Pallet	Pallet Weight	Face Ft./Pallet			
#818N	8"	18"	12"	45	3,515 lbs	45	•		

Regal Stone Pro® Straight

Product No.	Height	Width	Depth	Units/Pallet	Pallet Weight	Face Ft./Pallet			
#278N	8"	18"	12"	45	3,300 lbs	45	•		

Harington® 3-pc

Product No.	Height	Width	Depth	Units/Pallet	Pallet Weight	Face Ft./Pallet			
#876	6"	6"	12"	20	3,300 lbs	30	•		
	6"	12"	12"	20					
	6"	18"	12"	20					

Harington® Large

Product No.	Height	Width	Depth	Units/Pallet	Pallet Weight	Face Ft./Pallet			
#883	6"	18"	12"	45	3,800 lbs	34	•		

Harington® Freestanding 3-pc

Product No.	Height	Width	Depth	Units/Pallet	Pallet Weight	Face Ft./Pallet			
#889	6"	6"/4"	9"	16	2,160 lbs	22	•	•	•
	6"	12"/10"	9"	16					
	6"	18"/16"	9"	16					

Regal Stone® RockFace

Product No.	Height	Width	Depth	Units/Pallet	Pallet Weight	Face Ft./Pallet			
#823	6"	16¾"	12"	45	3,420 lbs	32	•		

RumbleStone® Collection

Product No.	Height	Width	Depth	Units/Pallet	Pallet Weight	Face Ft./Pallet			
#913	1¾"	3½"	7"	576	1,944 lbs	n/a	•	•	•
#917	3½"	7"	7"	144	1,944 lbs	n/a	•	•	•
#919	3½"	7"	10½"	96	1,944 lbs	n/a	•	•	•
#921	3½"	7"	14"	72	2,000 lbs	n/a	•	•	•
#923	3½"	7"	6½"/10¼"	120	1,938 lbs	n/a	•	•	•

Stonegate® & Cap

Product No.	Height	Width	Depth	Units/Pallet	Pallet Weight	Face Ft./Pallet			
#101176T (U)	6"	6"/4"	10"	20	2,695 lbs	26 (approx.)	•	•	•
	6"	12"/10"	10"	20					
	6"	16"/14"	10"	20					
#101177T (U)	3"	12"	11"	120	3,240 lbs	110 L.F.			

Note: Dimensions are nominal.

SPECIFICATIONS Walls by Best Block




Suitable For:

RETAINING WALLS
FREESTANDING WALLS
OUTDOOR LIVING

Keystone Compac® Stone Split

Product No.	Style	Height	Width	Depth	Units/Pallet	Pallet Weight	Face Ft./Pallet			
#WSS2	Stone Split	8"	18"	12"	24	1,950 lbs	24	•		




Keystone Compac® Victorian Ashlar

Product No.	Style	Height	Width	Depth	Units/Pallet	Pallet Weight	Face Ft./Pallet			
#WVI2	Victorian	8"	18"	12"	24	1,975 lbs	24	•		
#WVIS2	Victorian Score	8"	18"	12"	24	1,975 lbs	24	•		
#WVI42	Half High	4"	18"	12"	48	2,000 lbs	24	•		




Keystone Compac® Straight

Product No.	Style	Height	Width	Depth	Units/Pallet	Pallet Weight	Face Ft./Pallet			
#WIN2	Straight	8"	18"	12"	24	1,870 lbs	24	•		

Legacy Stone® Stone Split & Cap

Product No.	Style	Height	Width	Depth	Units/Pallet	Pallet Weight	Face Ft./Pallet			
#WLSS2	Stone Split	6"	16"	10"	48	2,095 lbs	32	•		
WLCAP	Cap	3"	12"/16"	11¼"	72	2,625 lbs	84 L.F.			

Legacy Stone® LedgeStone / Hewnstone & Cap

Product No.	Style	Height	Width	Depth	Units/Pallet	Pallet Weight	Face Ft./Pallet			
#WLLEDGE	LedgeStone	6"	16"	11"	48	1,930 lbs	32	•		
#WLH9	Hewnstone	6"	16"	11"	48	1,930 lbs	32	•		
#WLHC9	Cap	2½"	16"	8"	90	1,560 lbs	96 L.F.			

SPECIFICATIONS Caps & Corners

Cap Units

Product No.	Style	Height	Width	Depth	Units/Pallet	Pallet Weight	Linear Ft./Pallet
#110819	3" Rectangle	3"	18"	13½"	48	2,830 lbs	72
#831	4" Rectangle	4"	18"	10½"	48	2,850 lbs	72

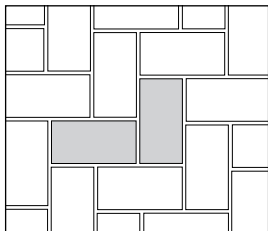
Corner Units

Product No.	Style	Height	Width	Depth	Units/Pallet	Pallet Weight	Linear Ft./Pallet
#110894	6" Straight	6"	18"	9"	40	3,070 lbs	30
#WBSRW	8" Straight	8"	18"	12"	24	1,778 lbs	24

Note: Dimensions are nominal.

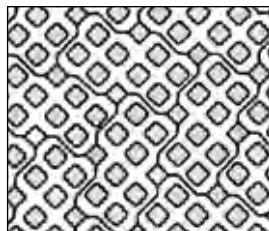
POPULAR LAYING PATTERNS by Paver

Eco-CityLock®



Herringbone

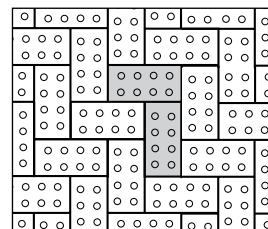
Grasstone™ II



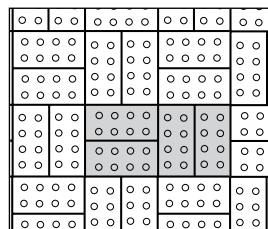
Grasstone II

Easily estimate how much product you need at:
www.pavestone-estimator.com/denver

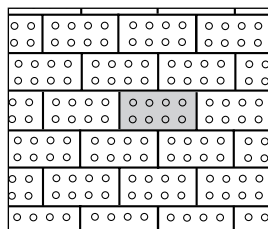
CityScape ADA



Herringbone

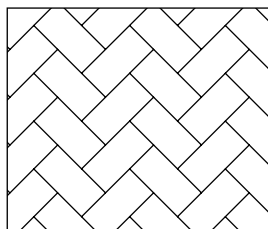


Parquet

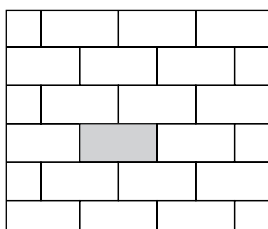


Runner Bond

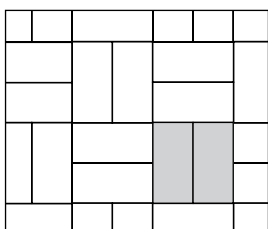
CityStone™ 6x12



Herringbone

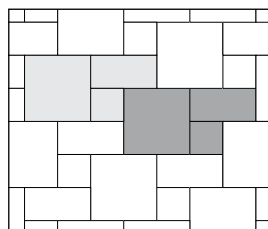


Runner Bond

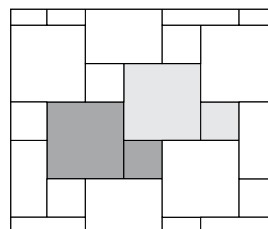


Parquet

CityStone™ XL

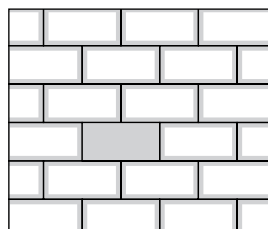


Random Pattern 1
 24x24 (57%), 12x24 (29%),
 12x12 (14%)

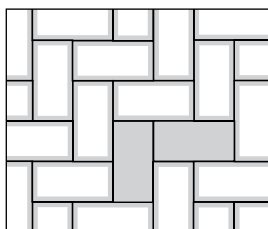


Random Pattern 2
 24x24 (80%), 12x12 (20%)

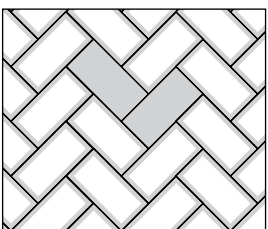
Holland Stone



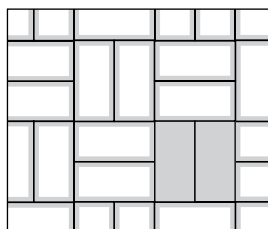
Runner Bond



90° Herringbone

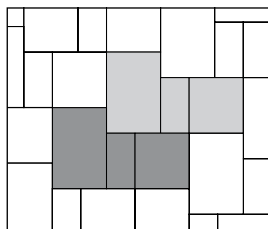


45° Herringbone

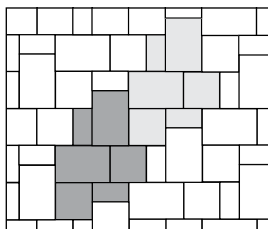


Parquet

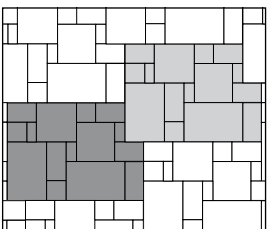
Panorama™ Demi & Supra



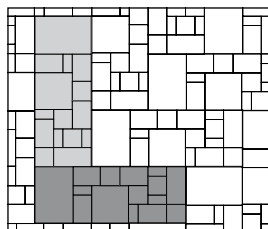
Demi or Supra Pattern 1



Demi or Supra Pattern 2



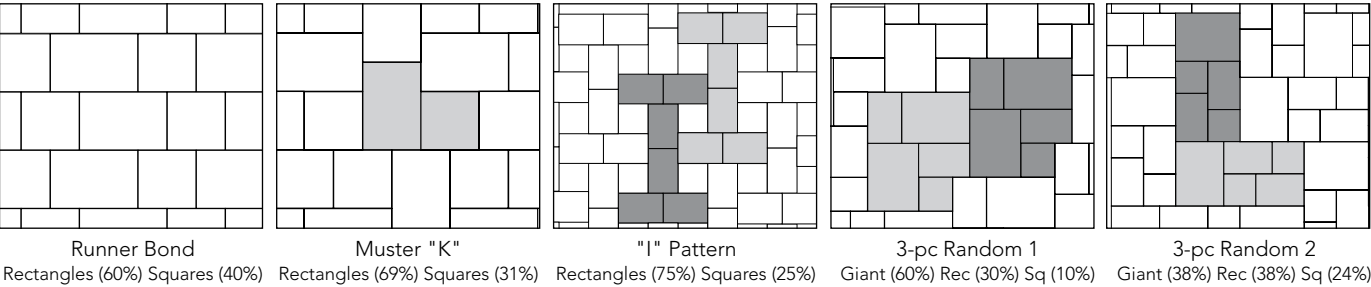
Demi/Supra Pattern 1
 Demi (30%), Supra (70%)



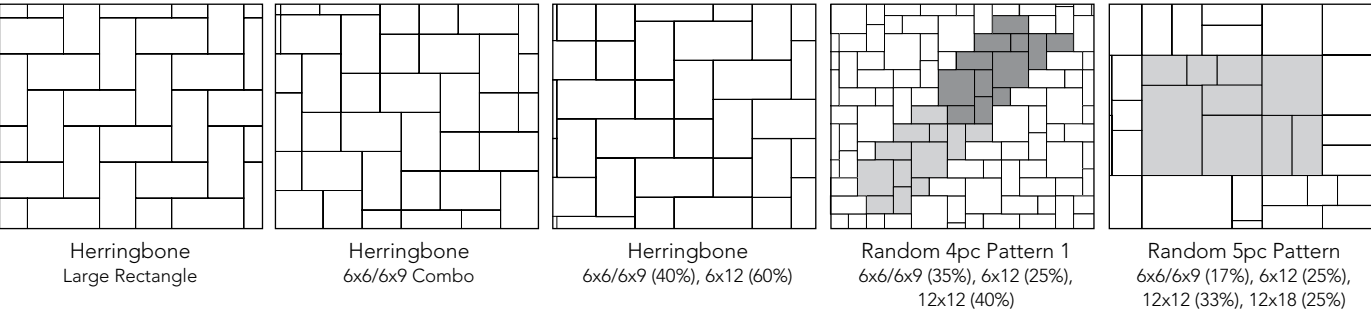
Demi/Supra Pattern 2
 Demi (50%), Supra (50%)

POPULAR LAYING PATTERNS by Paver

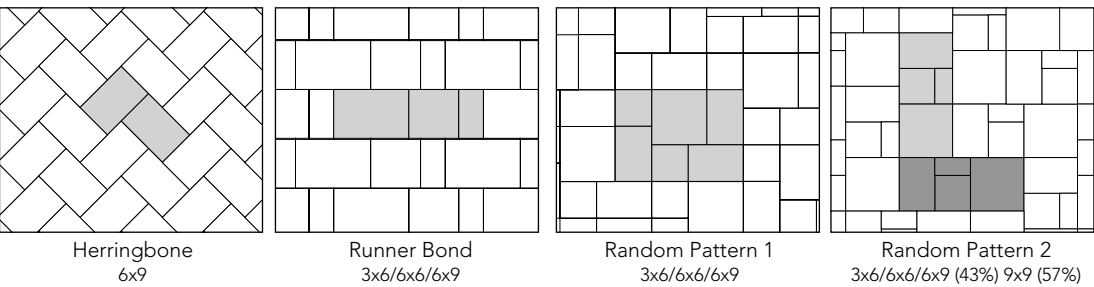
Plaza Stone



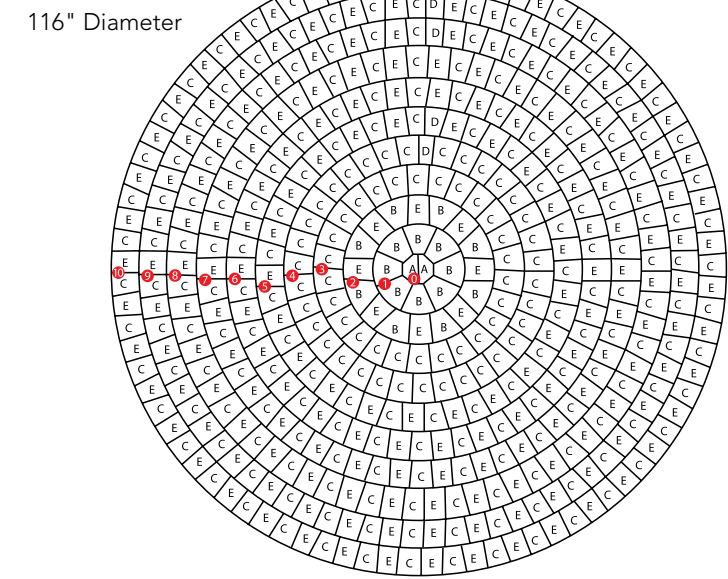
Venetian®



Vintage Stone®



Plaza Stone Circle



ACCESSORIES



Natural Look Sealer – Water-based penetrating silicone sealer waterproofs and protects concrete, brick, masonry, pavers, and stucco surfaces. Clear sealer does not change the surface appearance. Seals from water, salts, and oils. UV Resistant.

Use For: Driveways • Patios • Walls • Sidewalks • Pre-stress panels • Retaining walls • Tunnels • Loading docks • Bridge columns • Tunnels • Curbs/steps



COMMERCIAL GRADE POLYURETHANE CONSTRUCTION ADHESIVE – High performance, commercial grade adhesive designed for permanently bonding concrete, brick, marble, stone, wood, glass, aluminum, steel, PVC and tile.

Use For: Repairing broken concrete • Bonding retaining wall block and caps



WET LOOK HIGH GLOSS SEALER – Water- based penetrating silicone sealer waterproofs and enhances the color of concrete, masonry, brick, paver, and natural stone surfaces. Seals from acids, grease, food stains, oil, salt, and more. UV resistant.

Use For: Decorative concrete • Pavers • Natural stone • Exposed aggregate • Brick • Stucco



POLYMERIC SAND - Polymeric Sand is a precise mixture of polymer binders and clean natural sand. Polymeric Sand will bond with the pavers/stones adding strength to the joint as well as reliability to the pavement system. It is ideal for use on any paver surface such as sloping areas, driveways, patios, pool decks, sidewalks, etc.

Use For: Driveways • Sidewalks • Pool decks • Patios

BEFORE - No Sealer



AFTER - With Sealer



Color Variations

As in all natural materials, color in paving stones and wall stones has inherent variations. Paver and wall color is affected by the variances in the raw materials, concrete mixture, moisture content, climactic conditions, and other variations. Therefore, the colors shown are approximate representations of paver and wall colors, but should not be expected to be an exact match of what will be delivered.

The Nature of Efflorescence

Another cause of color variation in paving stones and wall stones may be the natural phenomenon called efflorescence. Efflorescence, a deposit of white salts consisting of mostly calcium carbonate, may appear as a white powder on the paver or wall surface and in no way affects the structural integrity. This phenomenon occurs in all concrete and although it cannot be completely prevented from occurring, efflorescence generally will weather off and disappear over time or can be removed with cleaners at the job site.





Stonegate® / Steamboat Blend



Manufactured at:

Keystone Hardscapes
11110 Charter Oak Ranch Rd
Fountain, CO 80817
Phone: 719-322-0101
Fax: 719-322-0123

Keystone Hardscapes
9401 E. 96th Avenue
Henderson, CO 80640
Phone: 303-287-3700
Fax: 303-287-9759

Colorado Best Block
8227 Blakeland Drive
Littleton, CO 80125
Phone: 303-791-3334

Colorado Best Block
2662 N Freeway
Pueblo, CO 81003
Phone: 719-543-3063

QUIKRETE and its subsidiaries (collectively QUIKRETE) reserve the right to improve its products and make changes to its specification and design without notice. The information contained herein has been compiled by QUIKRETE and to the best of its knowledge, accurately represents Keystone Hardscapes products and how it may be used in the applications which are illustrated. Site conditions, including load pressures acting on the wall, soil types and drainage conditions, may vary. Final determination of the suitability of the product for the use contemplated and the manner of product use are the sole responsibility of the user. Good construction practices and local building codes require the use of an engineered design when constructing retaining walls or freestanding walls in many conditions. Structural design and analysis should be provided by a qualified engineer.

NOTICE OF LIMITED WARRANTY: the terms of the Limited Warranty applicable to our products can be found at www.keystonehardscapes.com or can be obtained by sending a written request to c/o KEYSTONE HARDSCAPES, 5 Concourse Parkway, Atlanta, GA 30328 USA.

©2021 The QUIKRETE Companies - Patents Pending. • KHS - 02/2021

www.keystonehardscapes.com